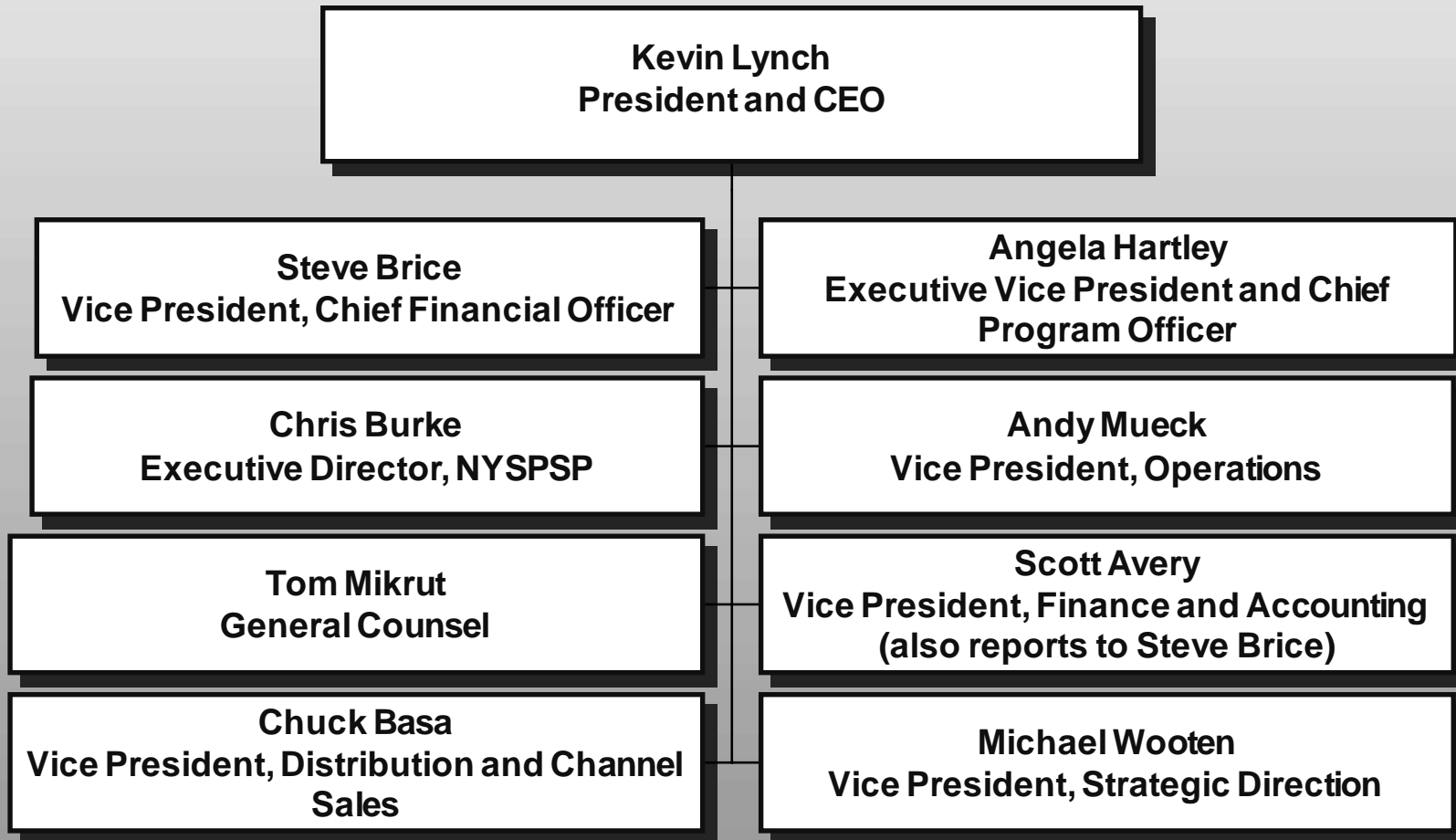


**National Industries for the  
Blind Organization Chart  
September 2021**

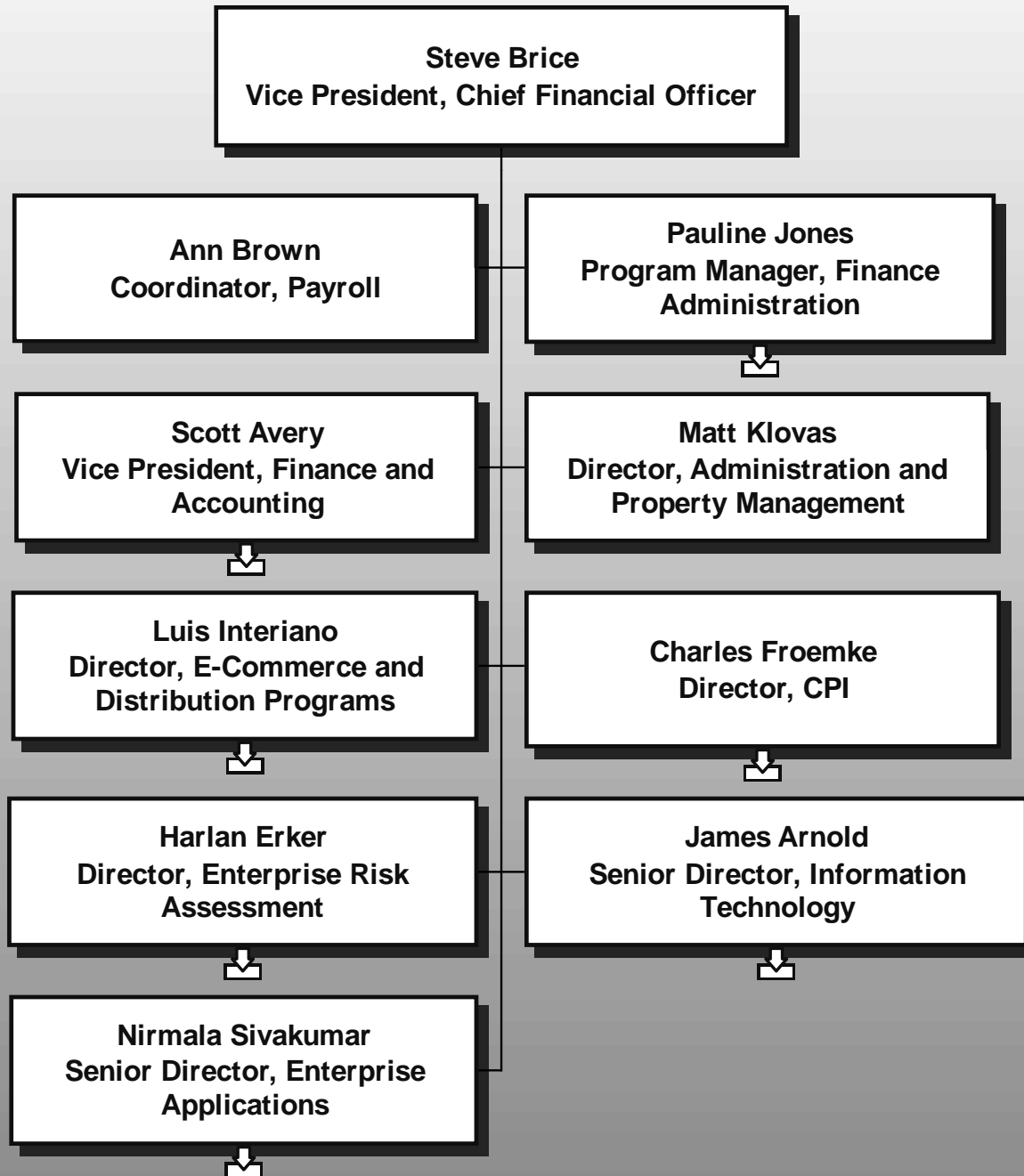
# LEADERSHIP TEAM



For specific job descriptions, please send request to [lvictor@nib.org](mailto:lvictor@nib.org)

*updated September 13, 2021*

# FINANCE AND ADMINISTRATION



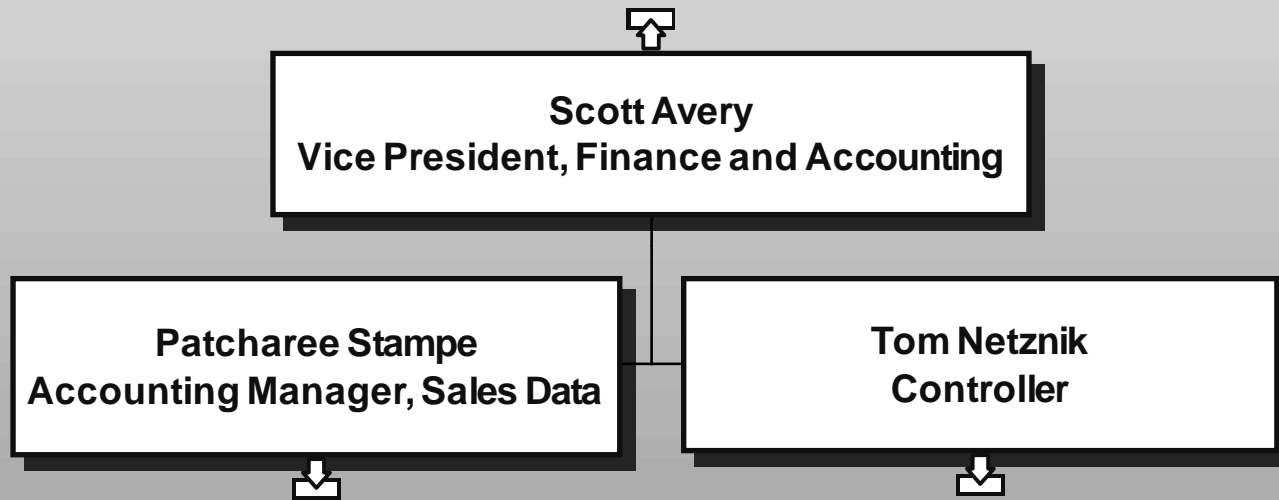
*updated September 13, 2021*



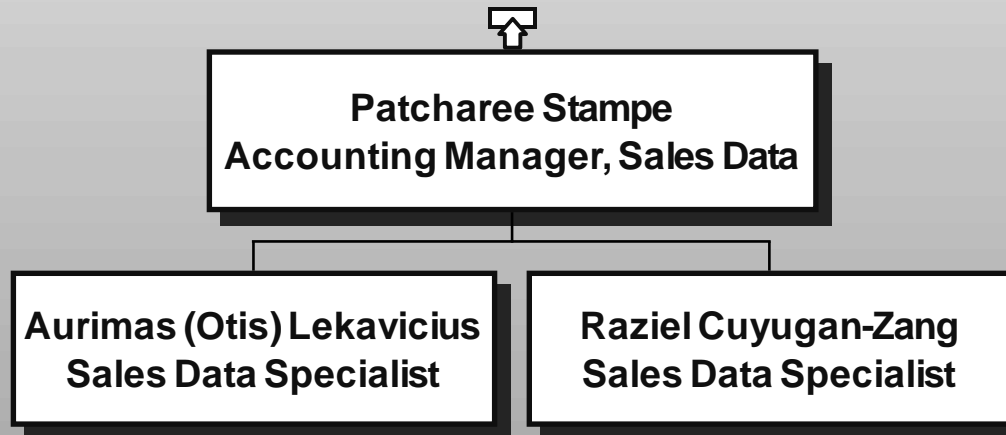
**Pauline Jones**  
**Program Manager, Finance**  
**Administration**

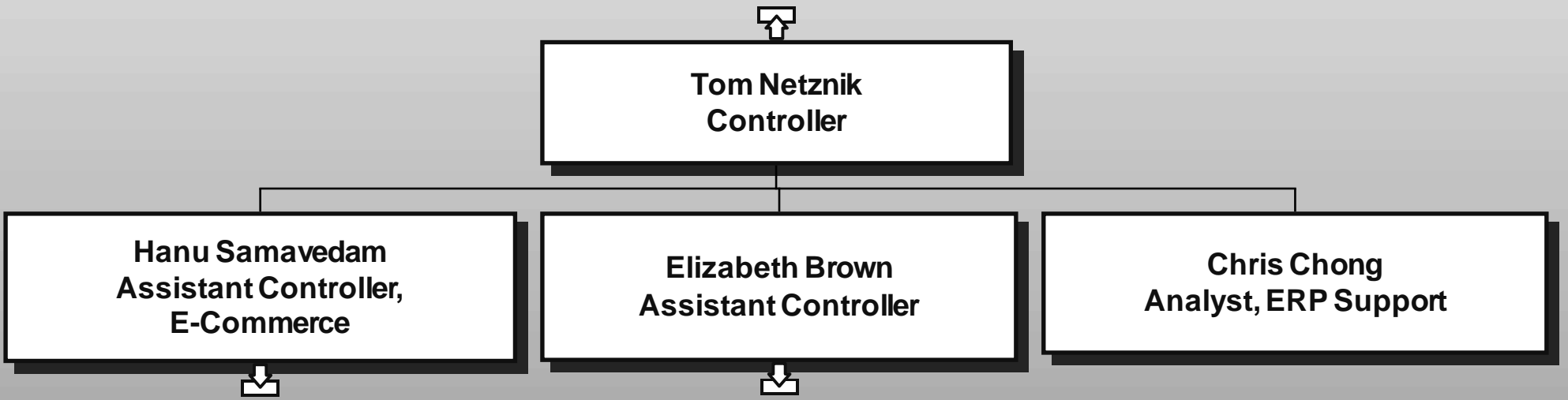
**Ramon Heard**  
**Senior Specialist, Office Services**

# ACCOUNTING

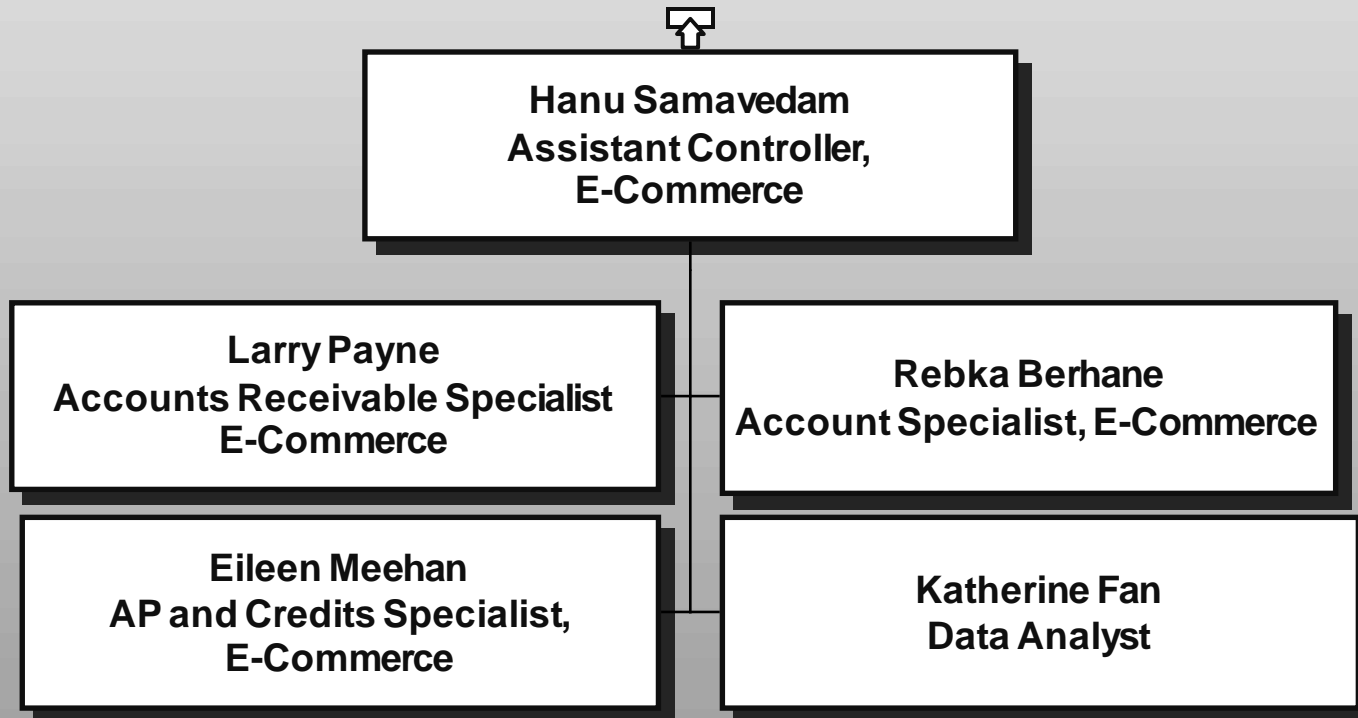


# ACCOUNTING, SALES DATA



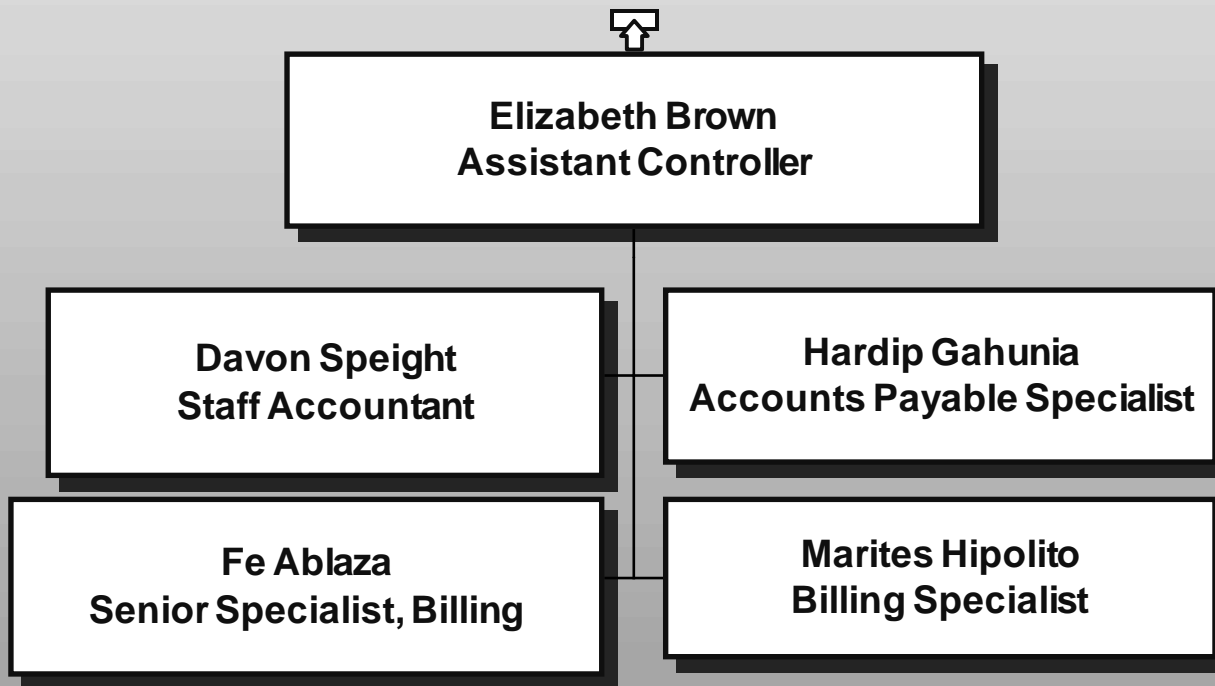


# ACCOUNTING, E-COMMERCE

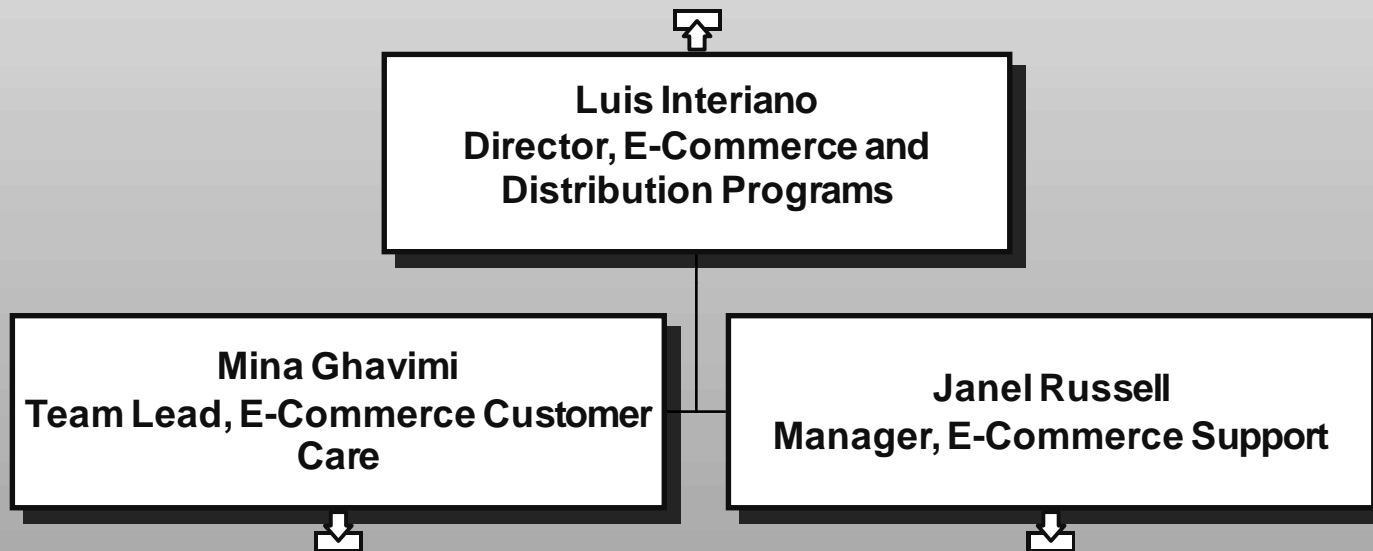




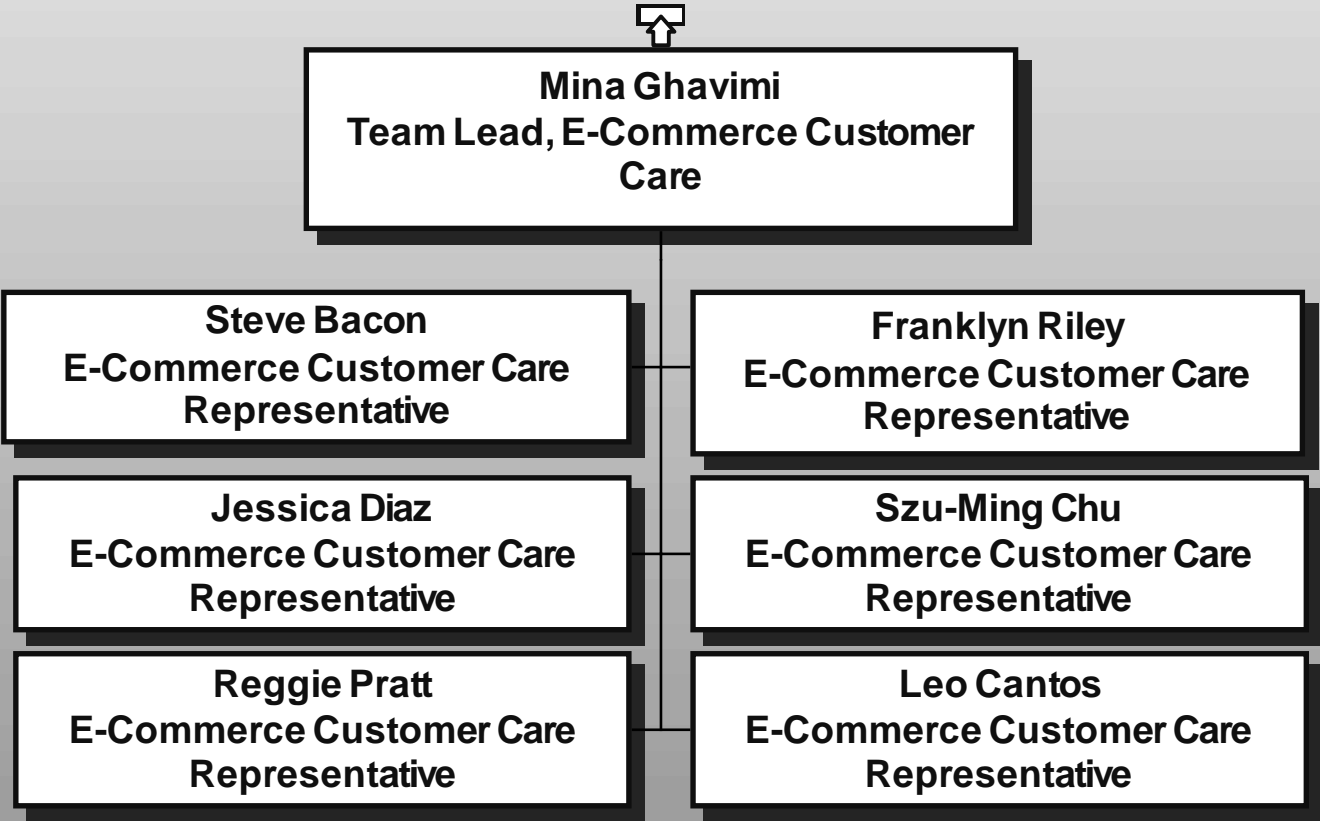
# ACCOUNTING, NIB



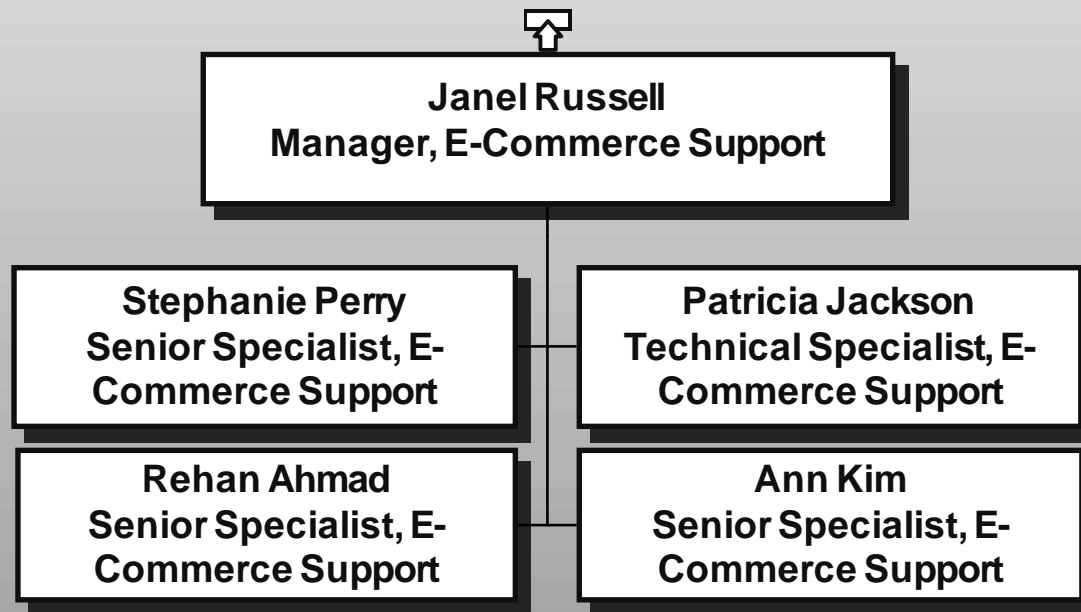
# E-COMMERCE AND DISTRIBUTION PROGRAMS



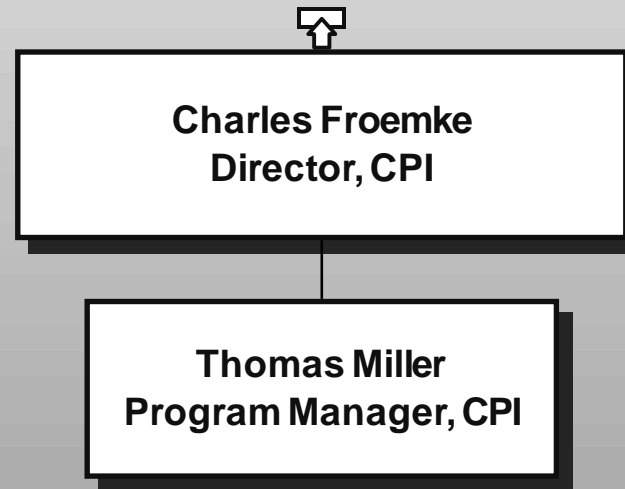
# E-COMMERCE CUSTOMER CARE TEAM



# E-COMMERCE AND DISTRIBUTION PROGRAMS



# CONTINUOUS PROCESS IMPROVEMENT

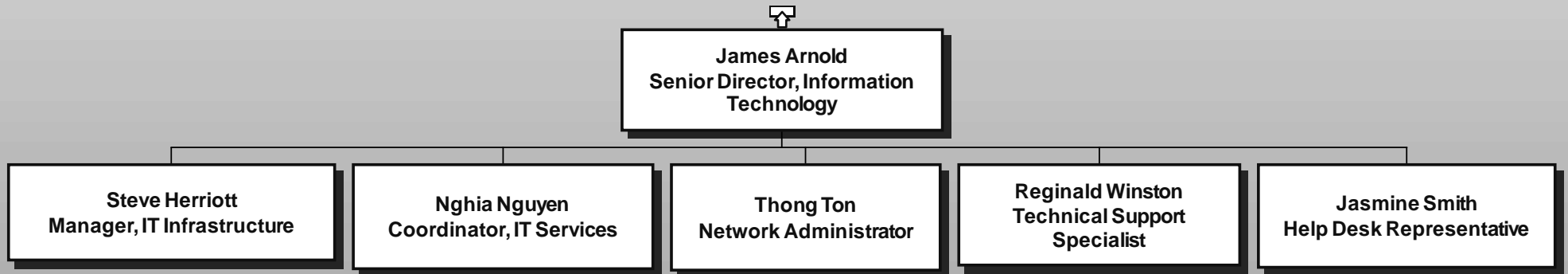




**Harlan Erker**  
**Director, Enterprise Risk**  
**Assessment**

**Herb Singletary**  
**Program Manager, Quality Assurance**

# INFORMATION TECHNOLOGY



# INFORMATION TECHNOLOGY



**Nirmala Sivakumar**  
Senior Director, Enterprise  
Applications

**Vacant**  
Manager, Enterprise  
Applications

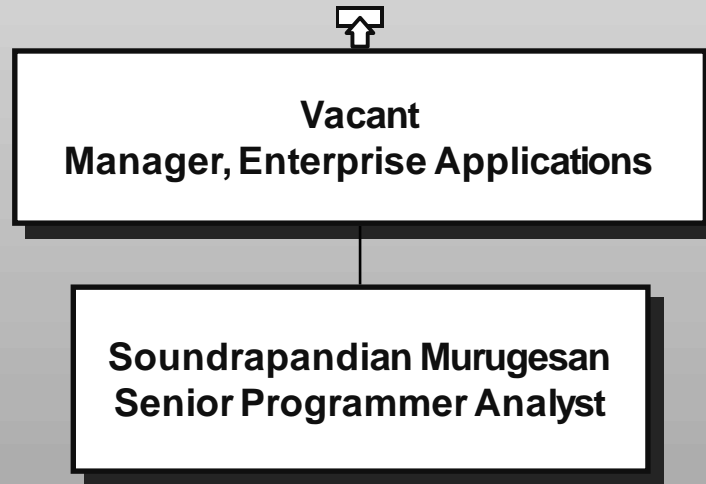
**Chris Budny**  
Program Director, ERP Support

**Mounika Karuturi**  
Programmer Analyst

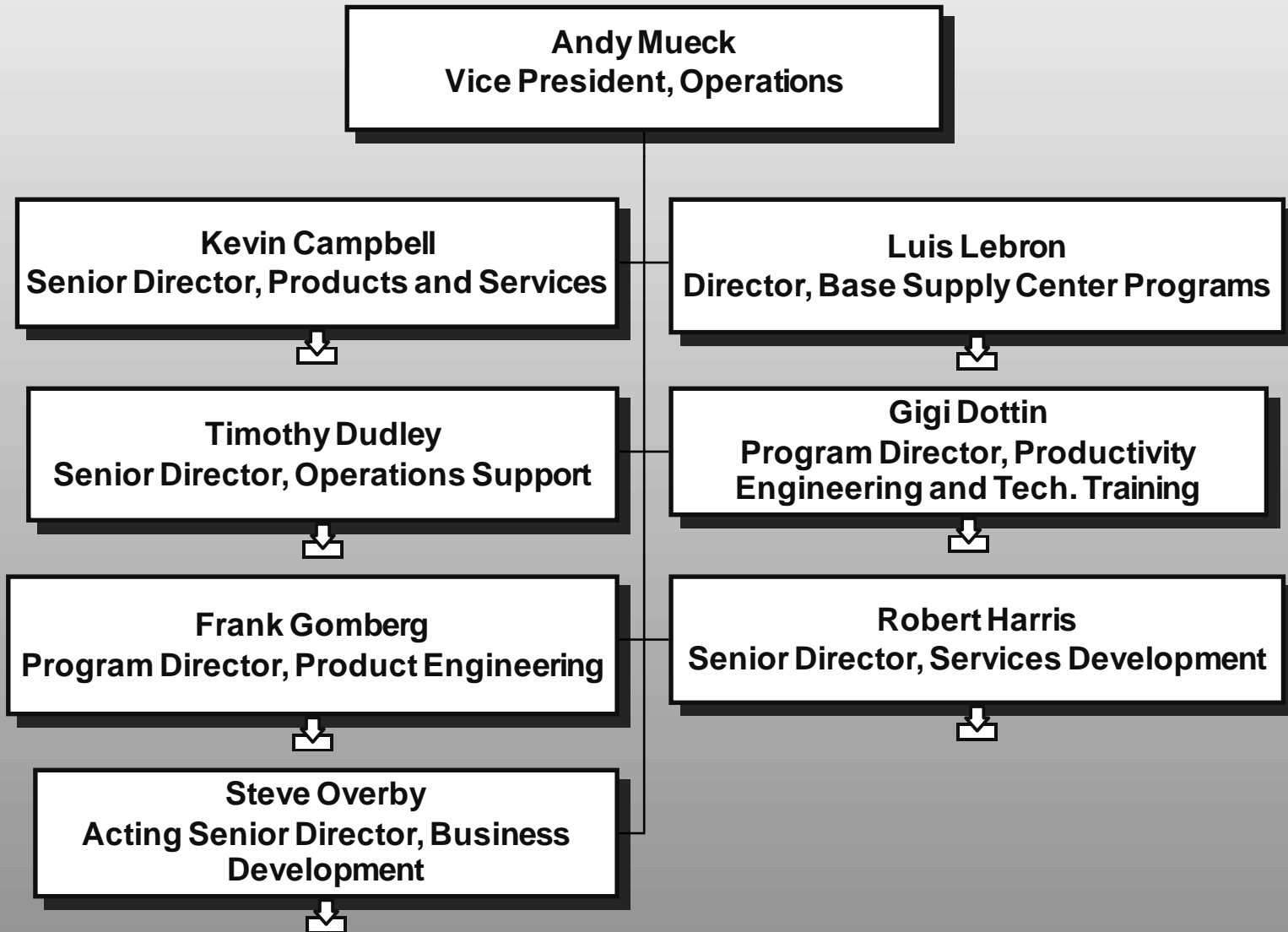




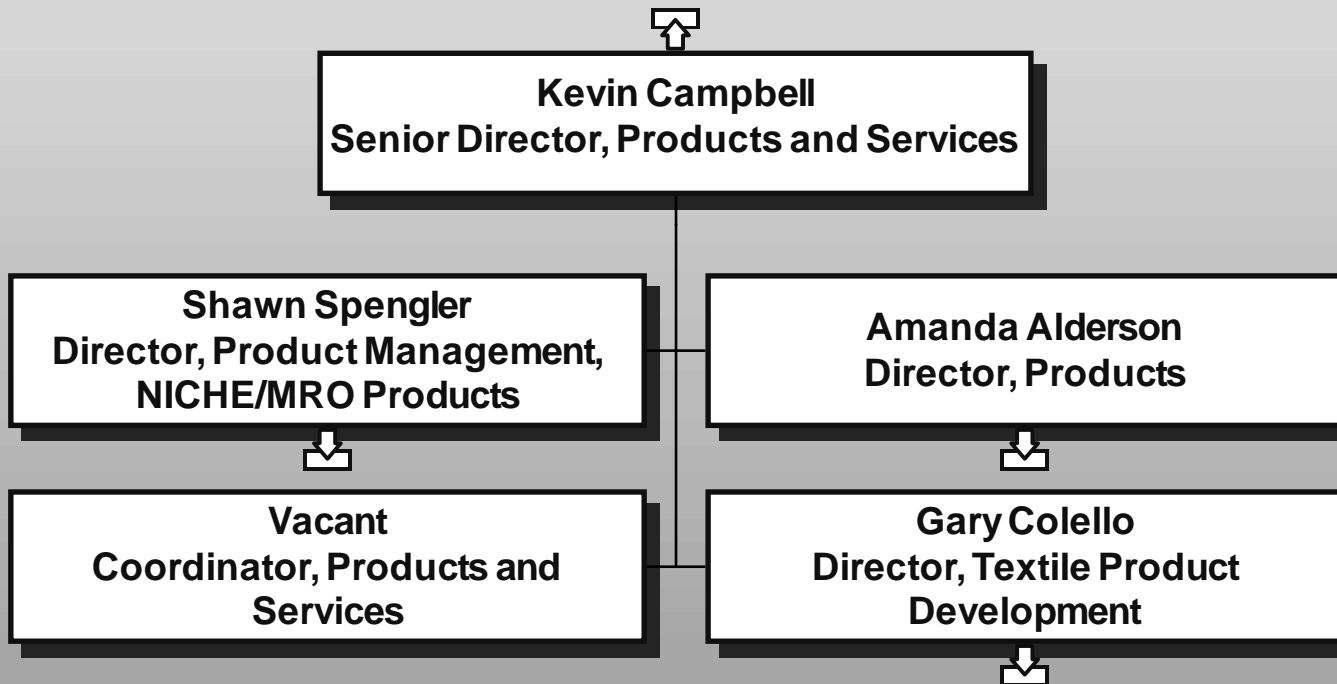
# INFORMATION TECHNOLOGY



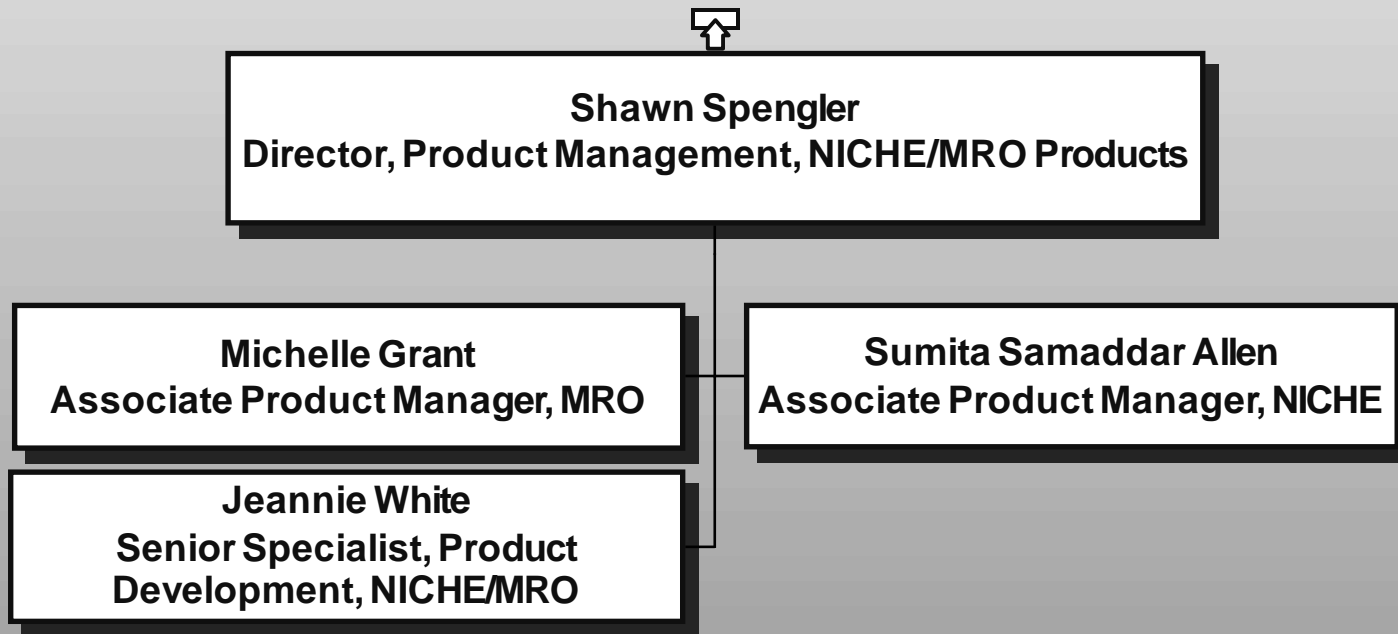
# OPERATIONS



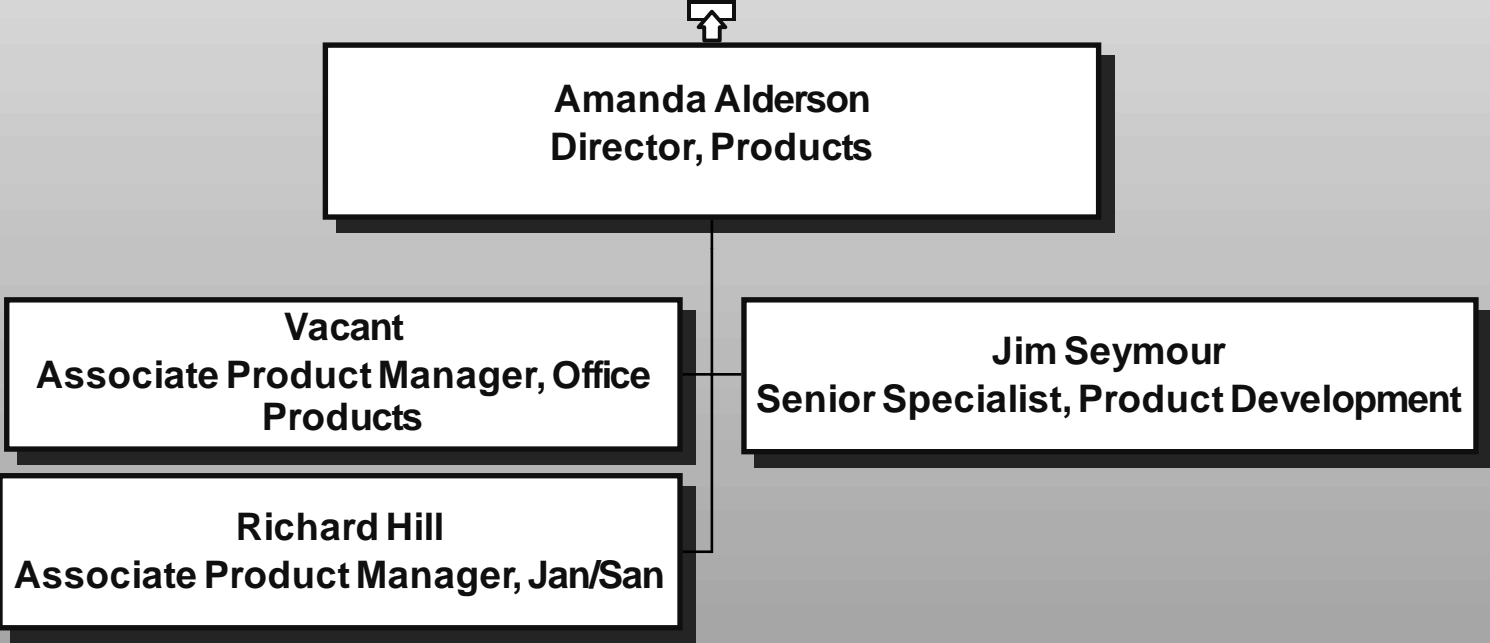
# PRODUCTS



# NICHE AND MRO PRODUCTS



# OFFICE PRODUCTS AND JAN/SAN

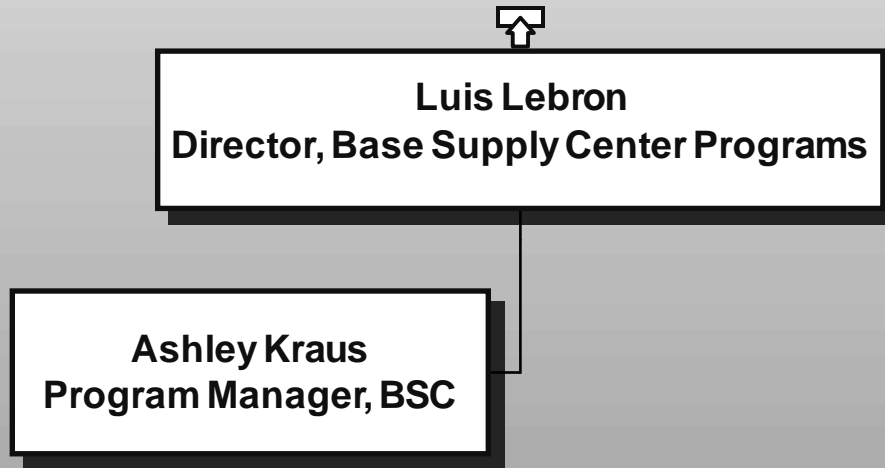




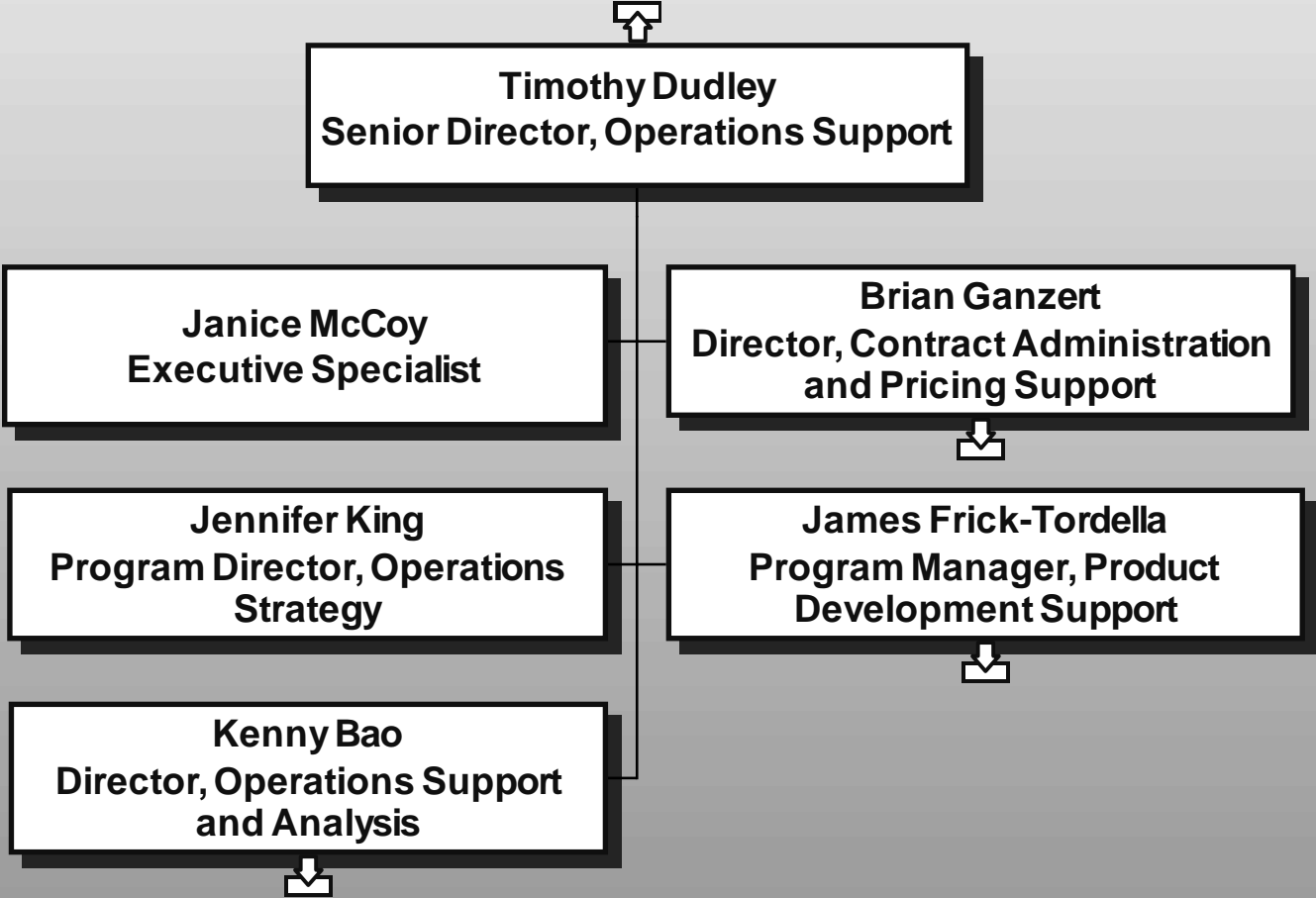
**Gary Colello**  
**Director, Textile Product**  
**Development**

**Donielle Lorelli**  
**Associate Product Manager - Textiles**

# BASE SUPPLY CENTERS (BSC)

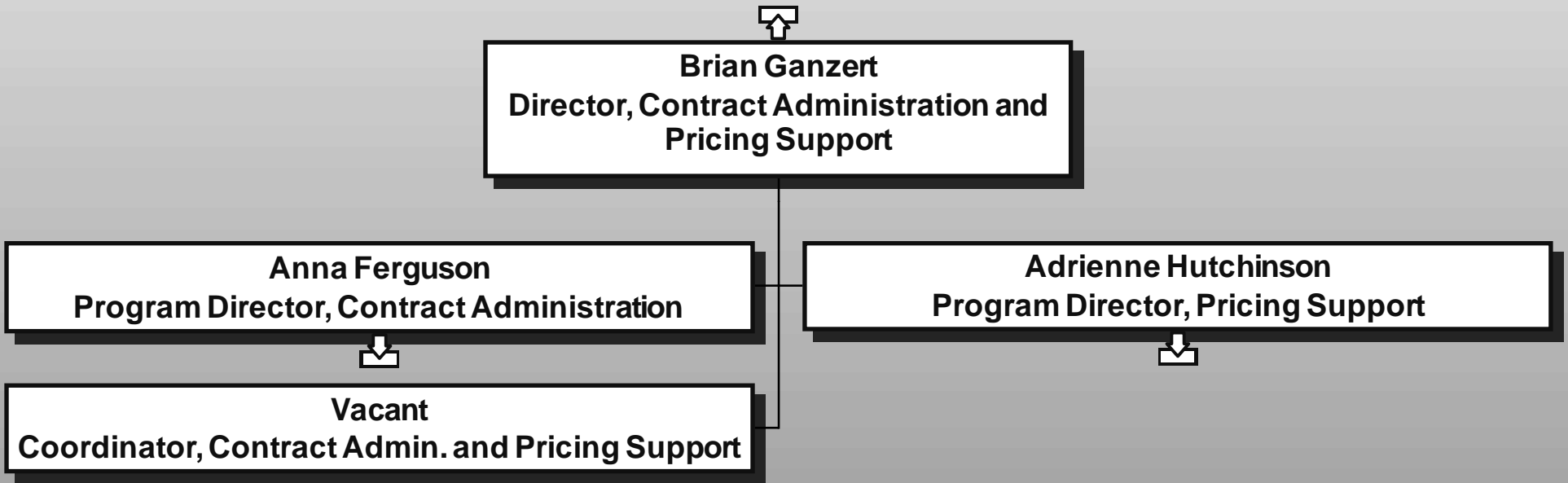


# OPERATIONS SUPPORT

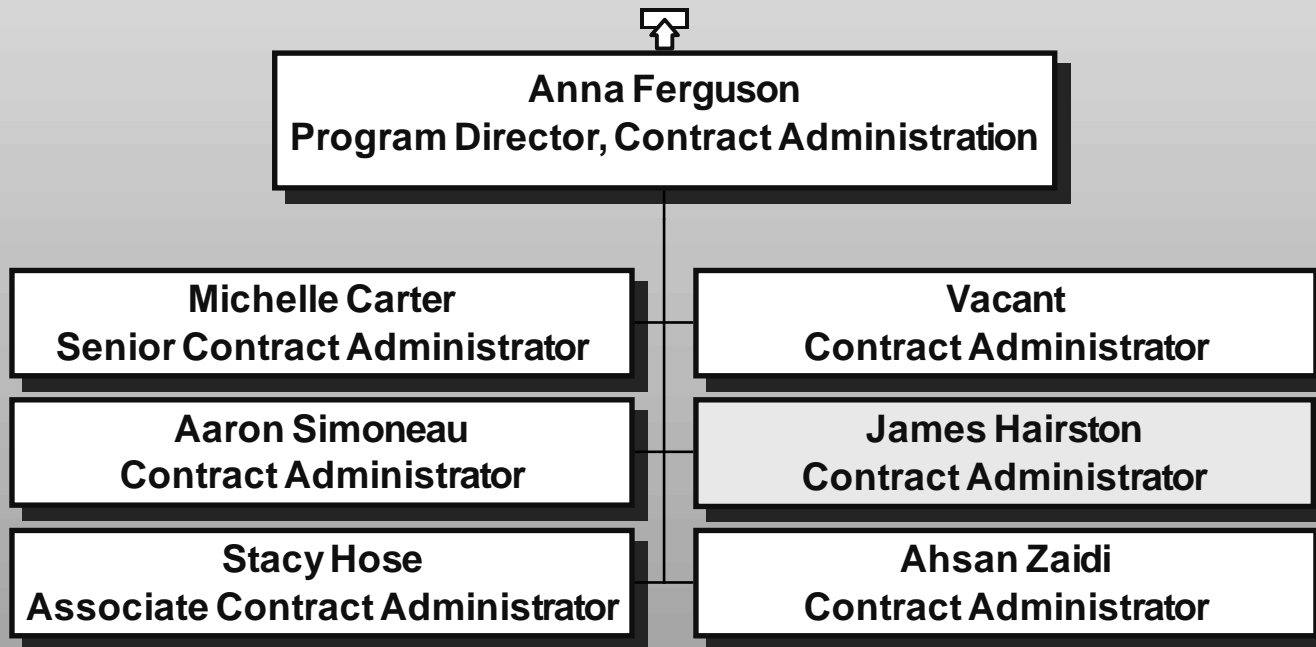




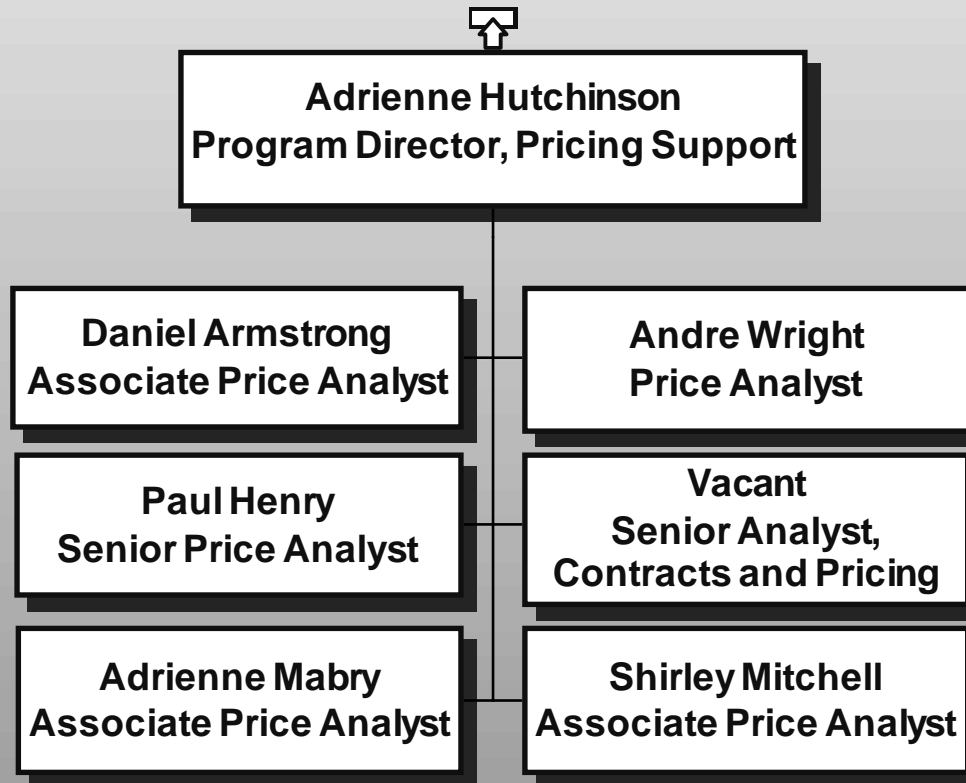
# CONTRACT ADMINISTRATION AND PRICING SUPPORT



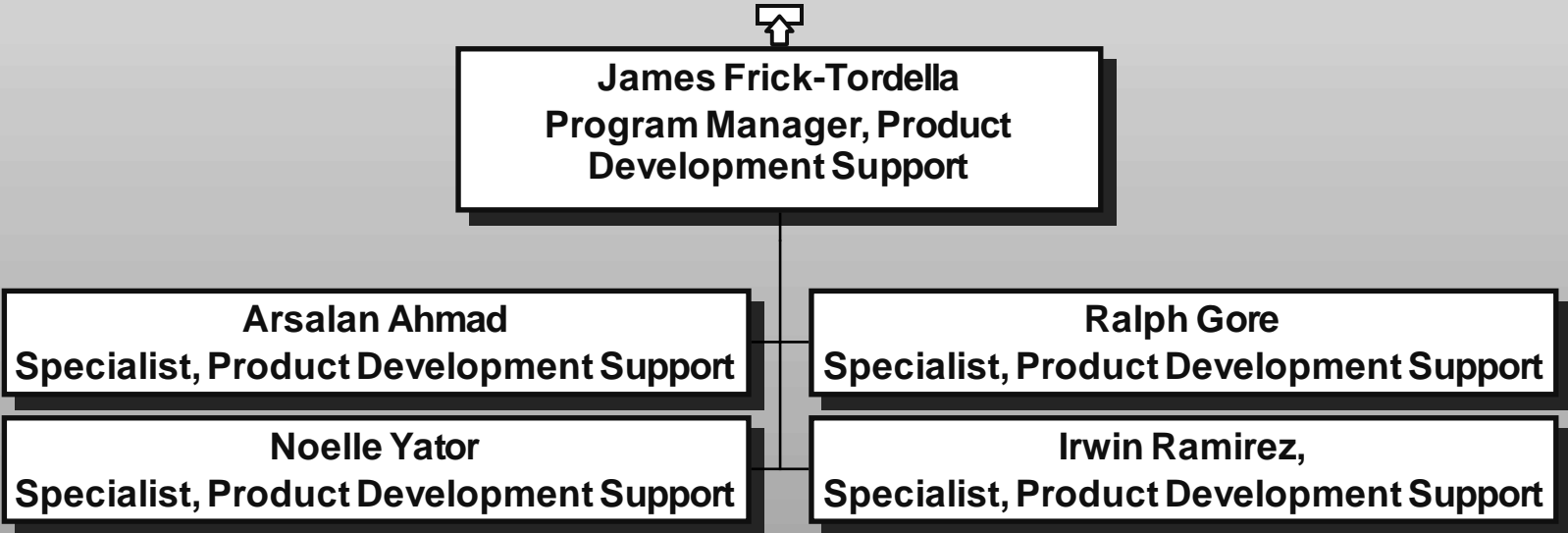
# CONTRACT ADMINISTRATION



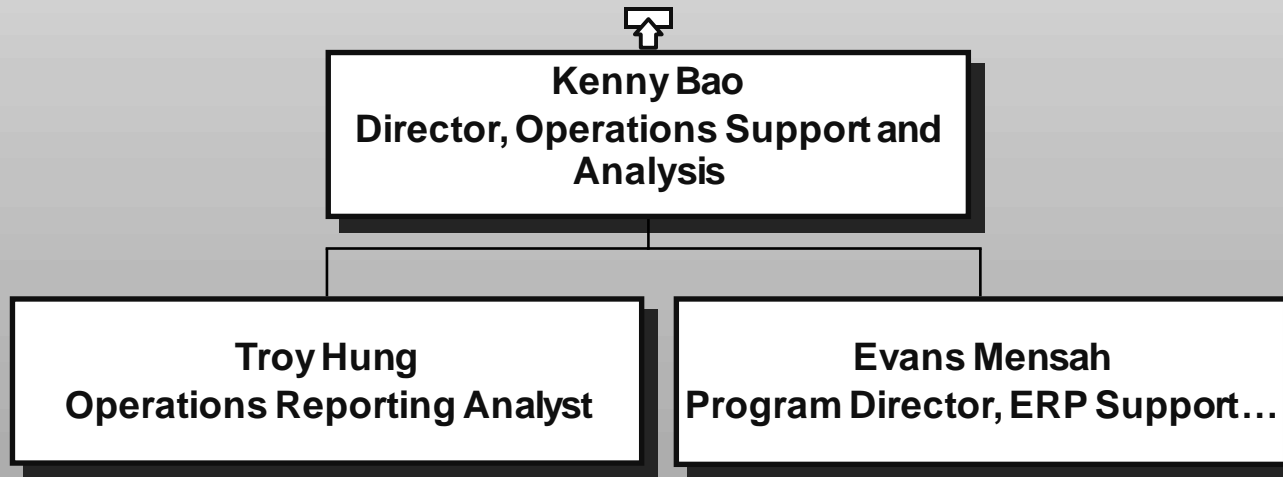
# PRICING SUPPORT



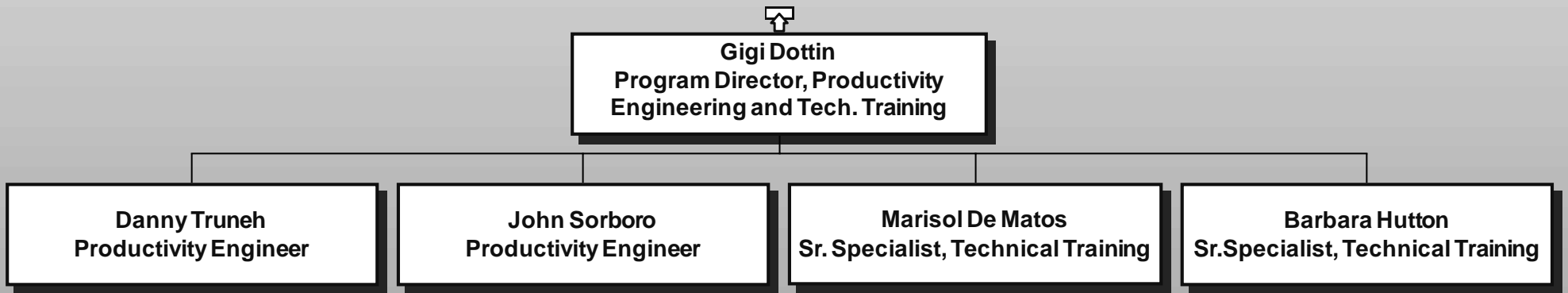
# PRODUCT DEVELOPMENT SUPPORT



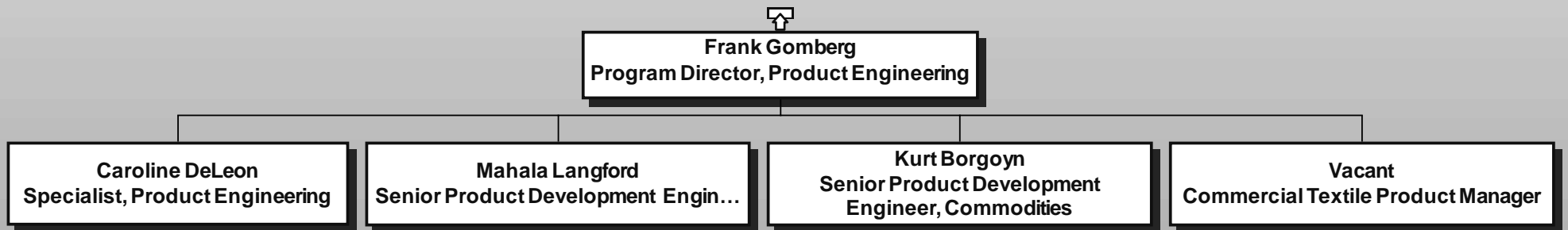
# OPERATIONS PLANNING AND ANALYSIS



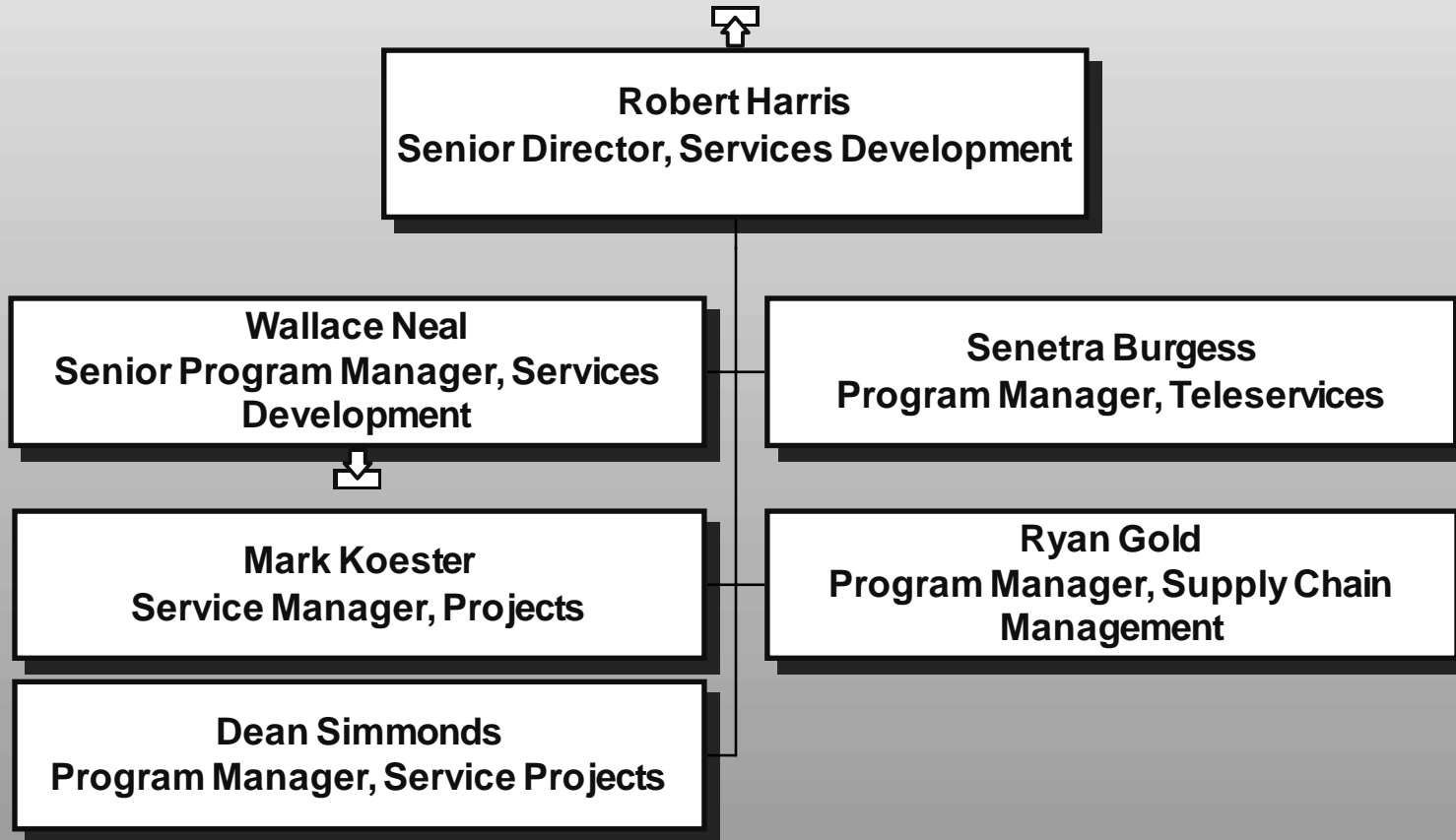
# PRODUCTIVITY AND PRODUCT ENGINEERING



# PRODUCTIVITY AND PRODUCT ENGINEERING

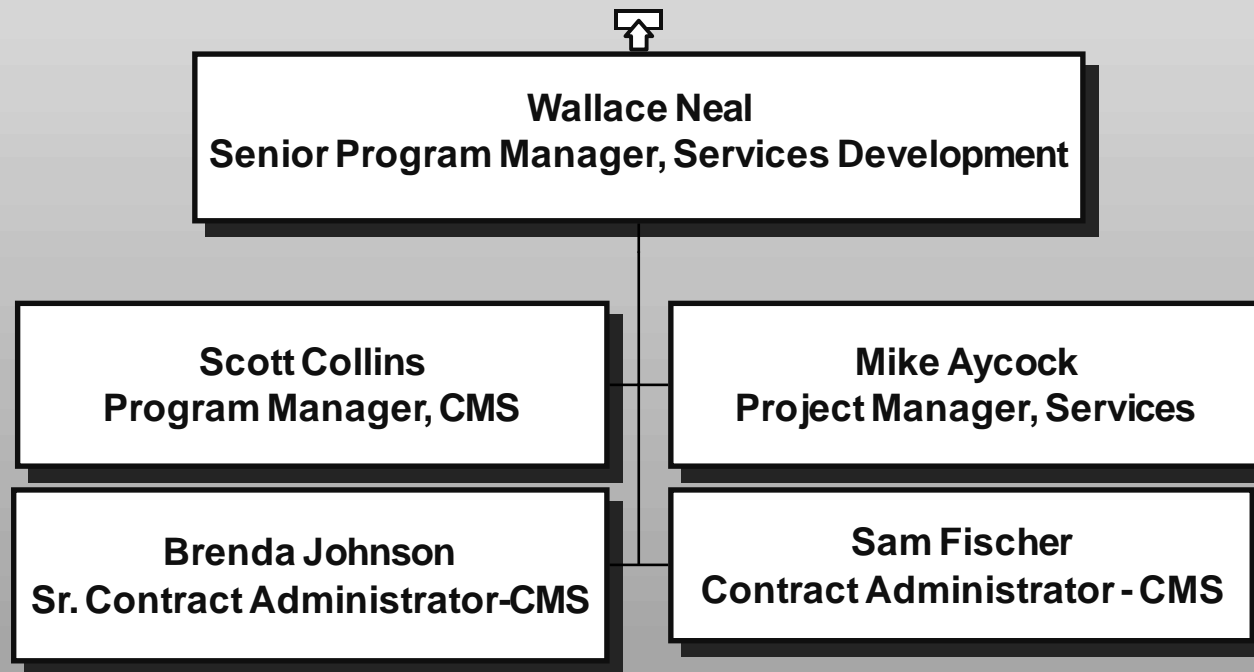


# SERVICES DEVELOPMENT

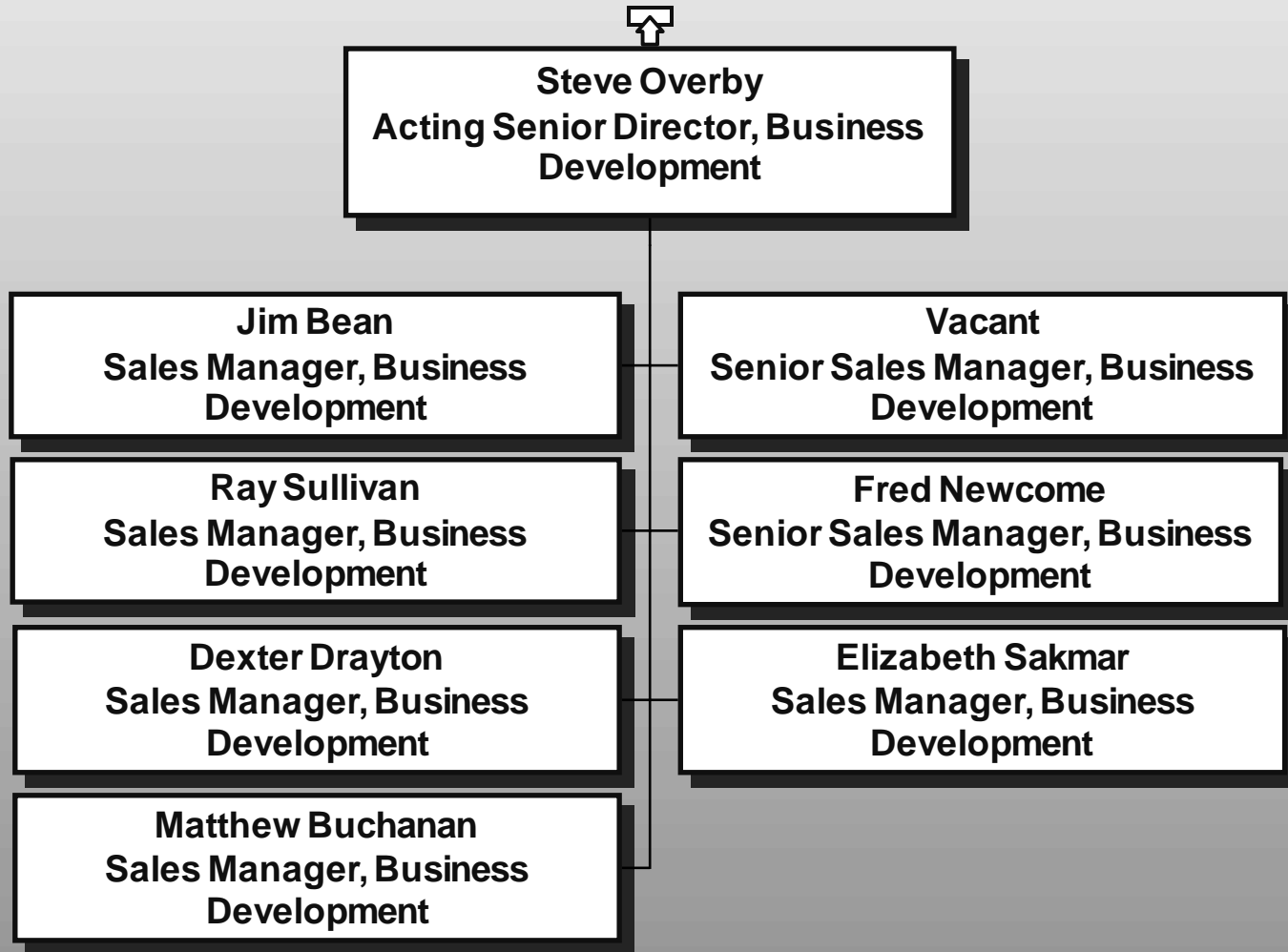




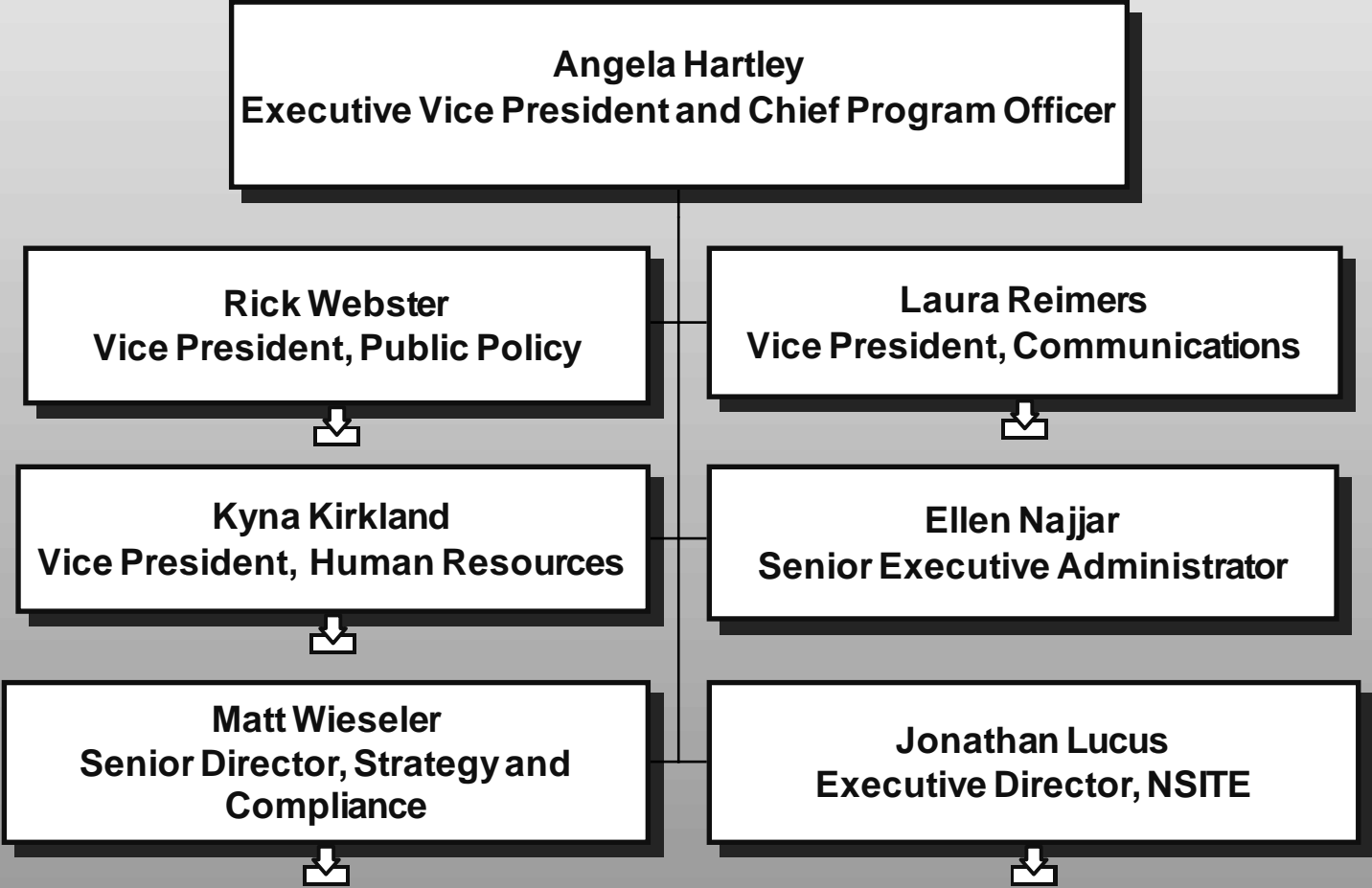
# SERVICES DEVELOPMENT



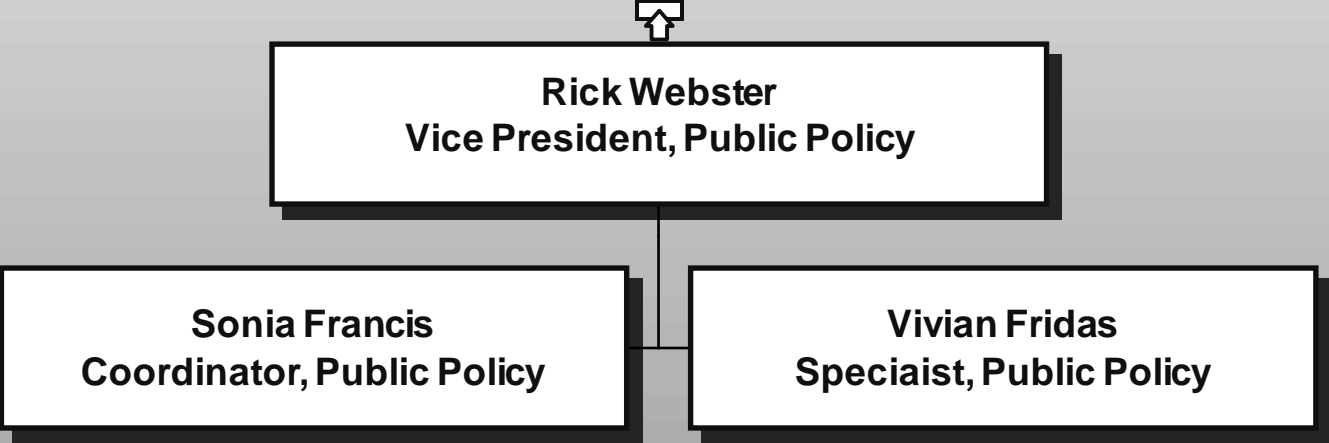
# BUSINESS DEVELOPMENT



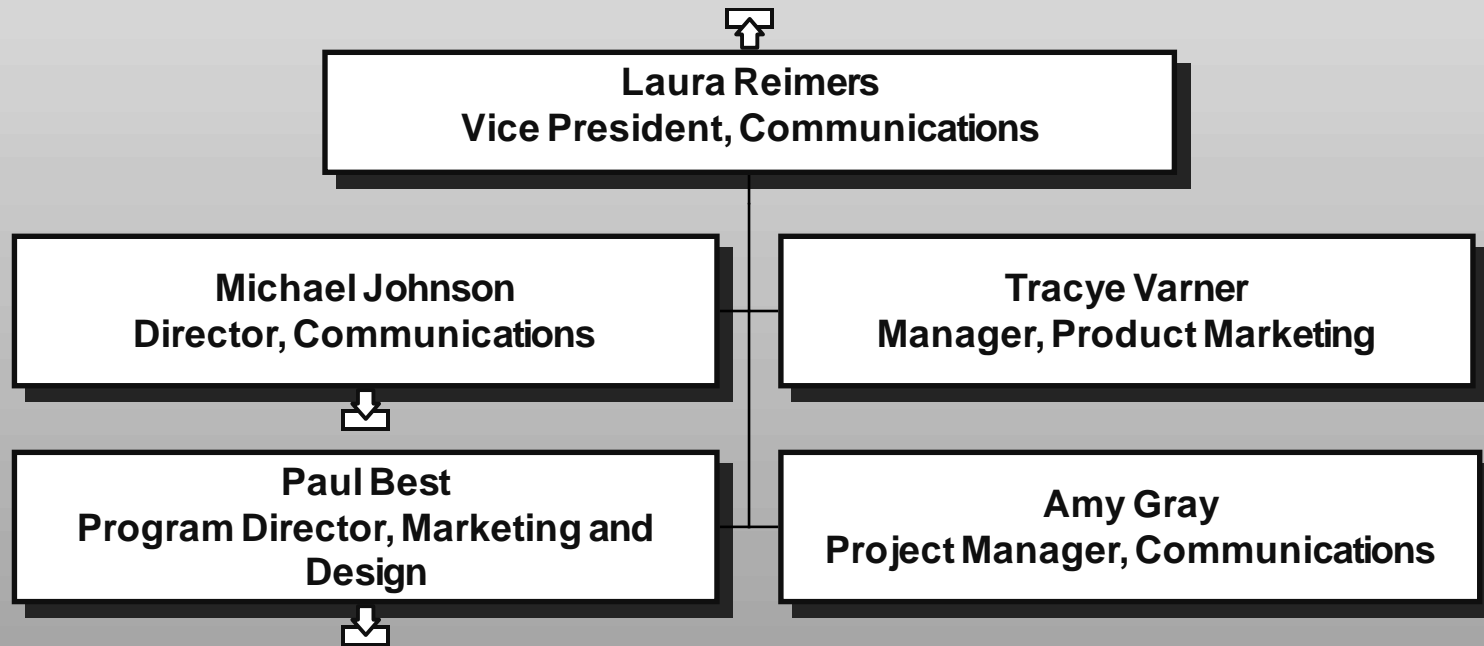
# PROGRAM MANAGEMENT



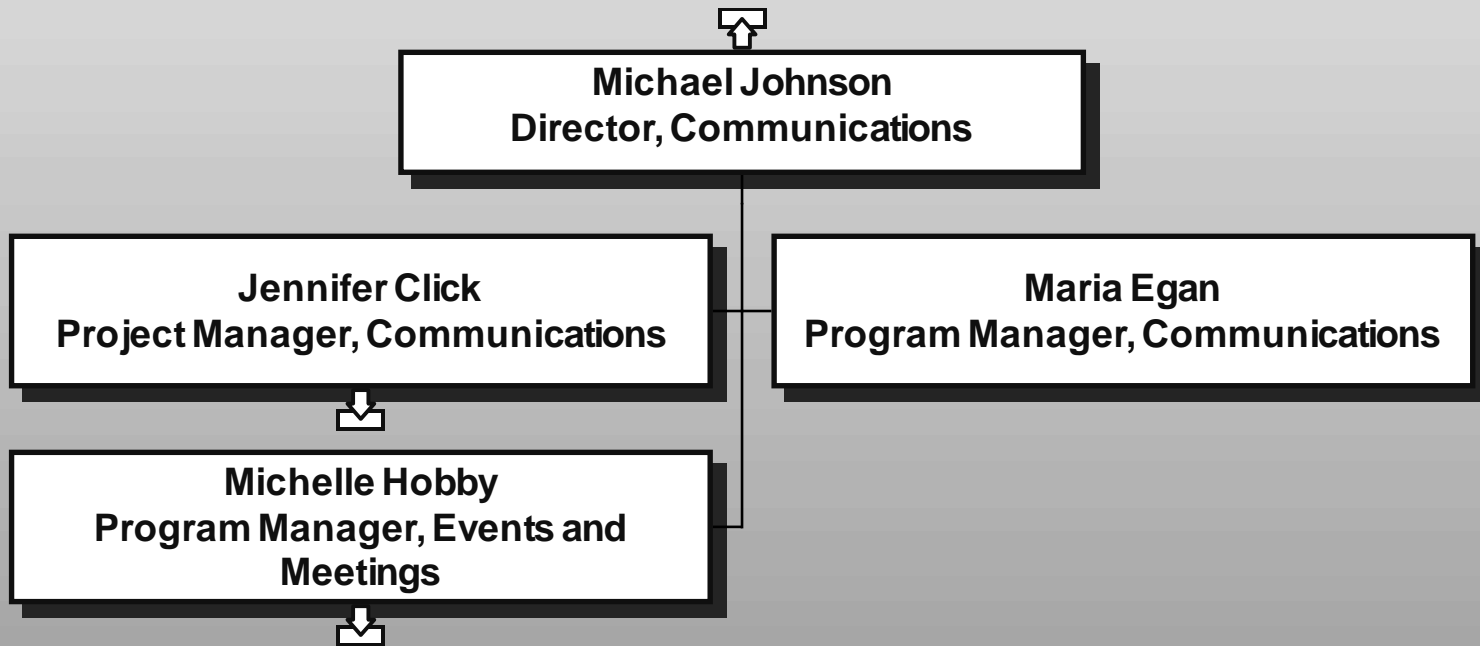
# PROGRAM MANAGEMENT



# COMMUNICATIONS



# COMMUNICATIONS





**Jennifer Click**  
**Project Manager, Communications**

**Joe Hobson**  
**Communications Specialist**



**Michelle Hobby**  
**Program Manager, Events and**  
**Meetings**

**Maurice Crittendon**  
**Specialist, Events and Meetings**



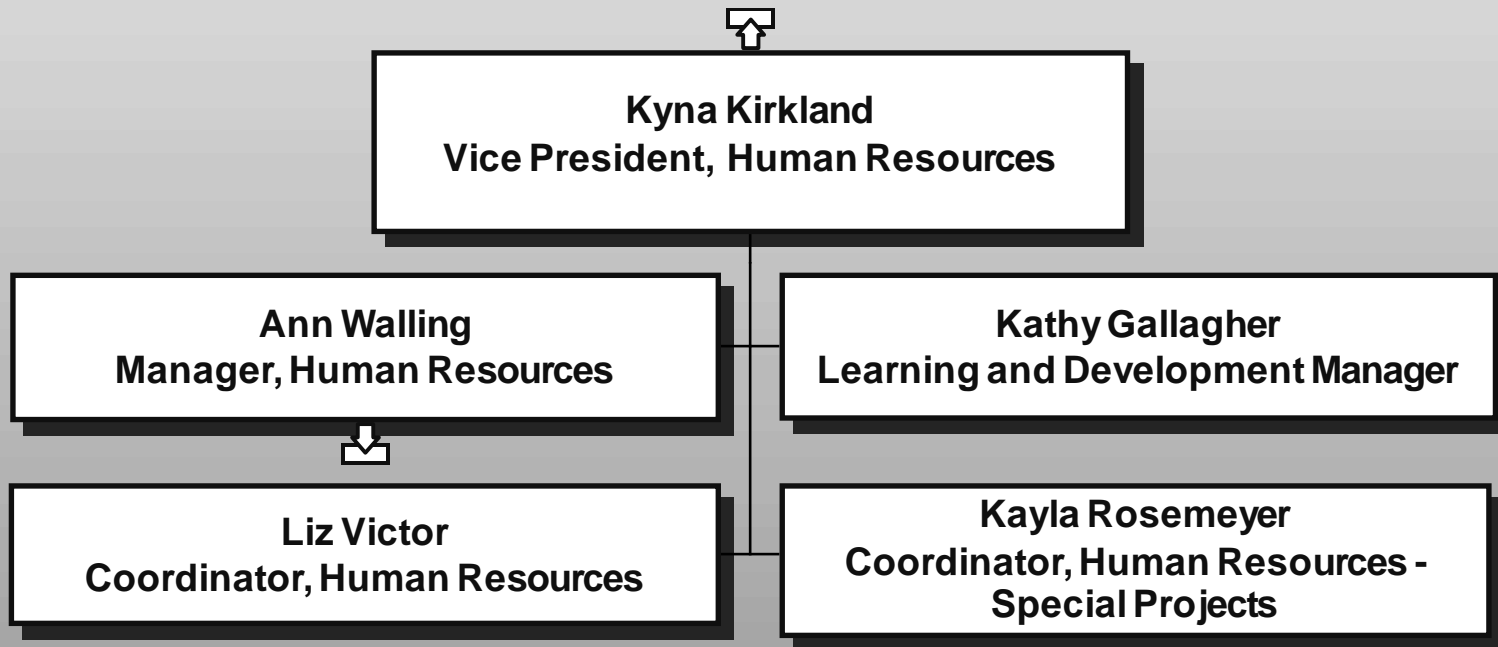


**Paul Best**  
**Program Director, Marketing and Design**

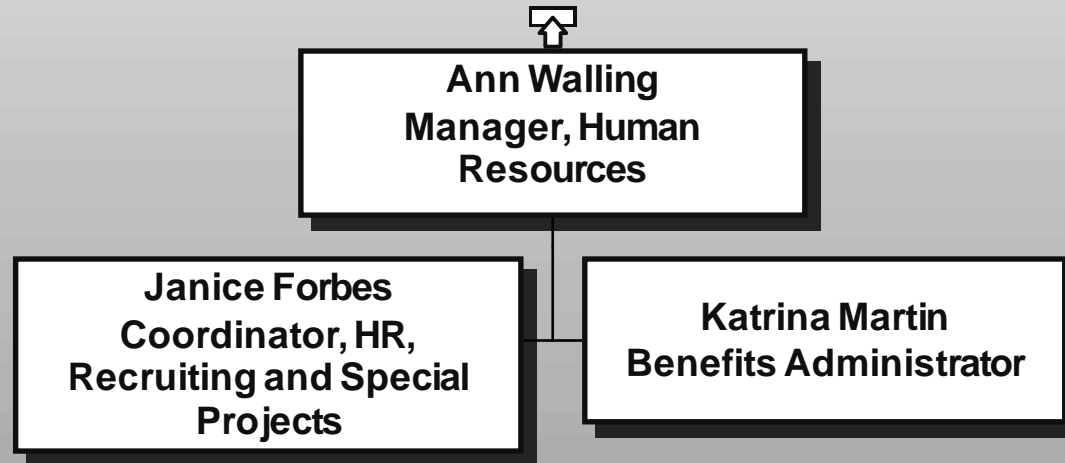
**Catherine Schultz**  
**Branding and Packaging Manager**

**Jermaine Eubanks**  
**Specialist, Communications Design**

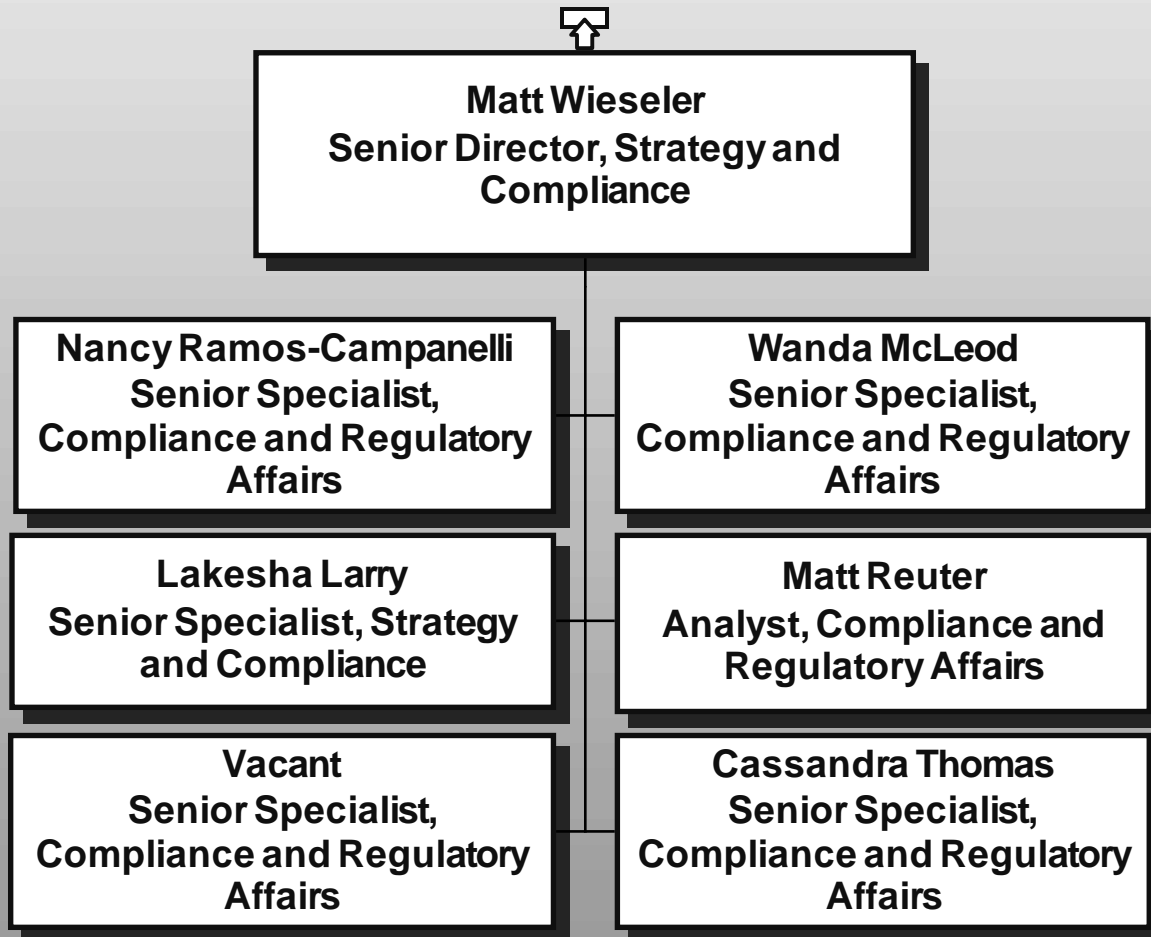
# HUMAN RESOURCES



# HUMAN RESOURCES



# STRATEGY AND COMPLIANCE DEPARTMENT



# WORKFORCE DEVELOPMENT

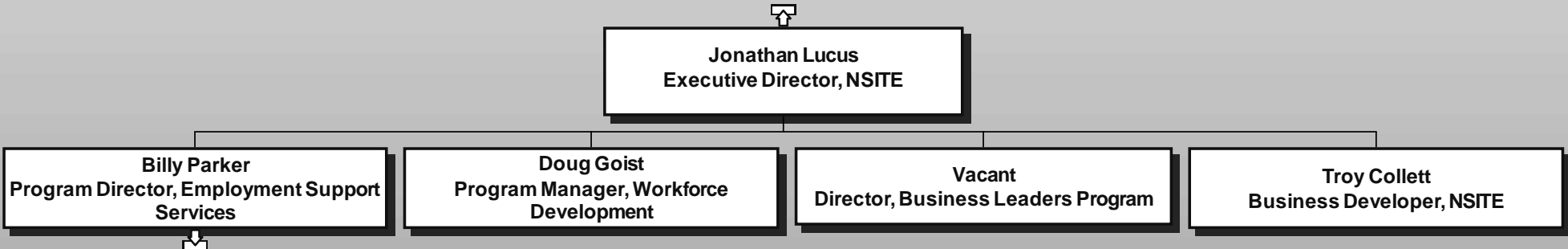
**Jonathan Lucus**  
Executive Director, NSITE

**Billy Parker**  
Program Director, Employment Support  
Services

**Doug Goist**  
Program Manager, Workforce  
Development

**Vacant**  
Director, Business Leaders Program

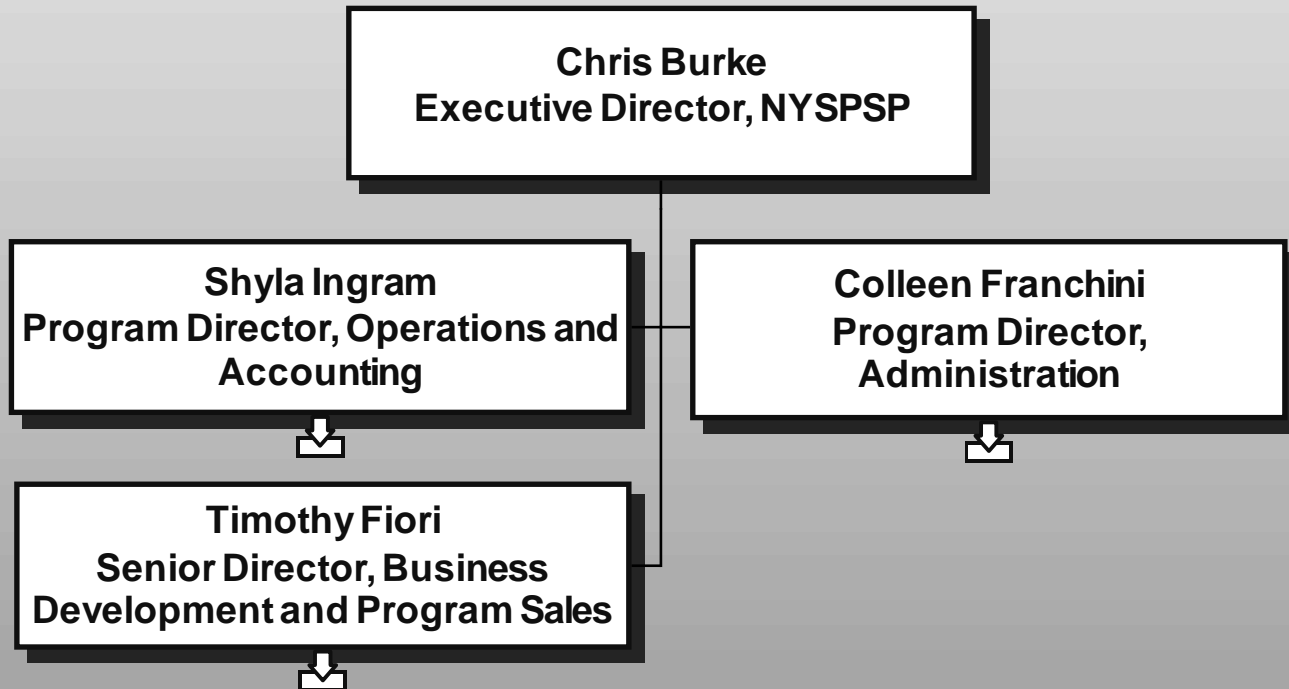
**Troy Collett**  
Business Developer, NSITE



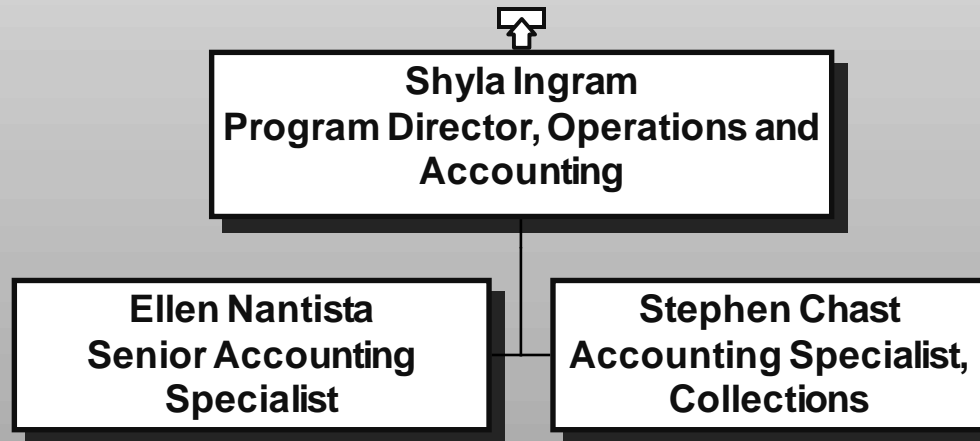
# EMPLOYMENT SUPPORT SERVICES



# NEW YORK STATE PREFERRED SOURCE PROGRAM

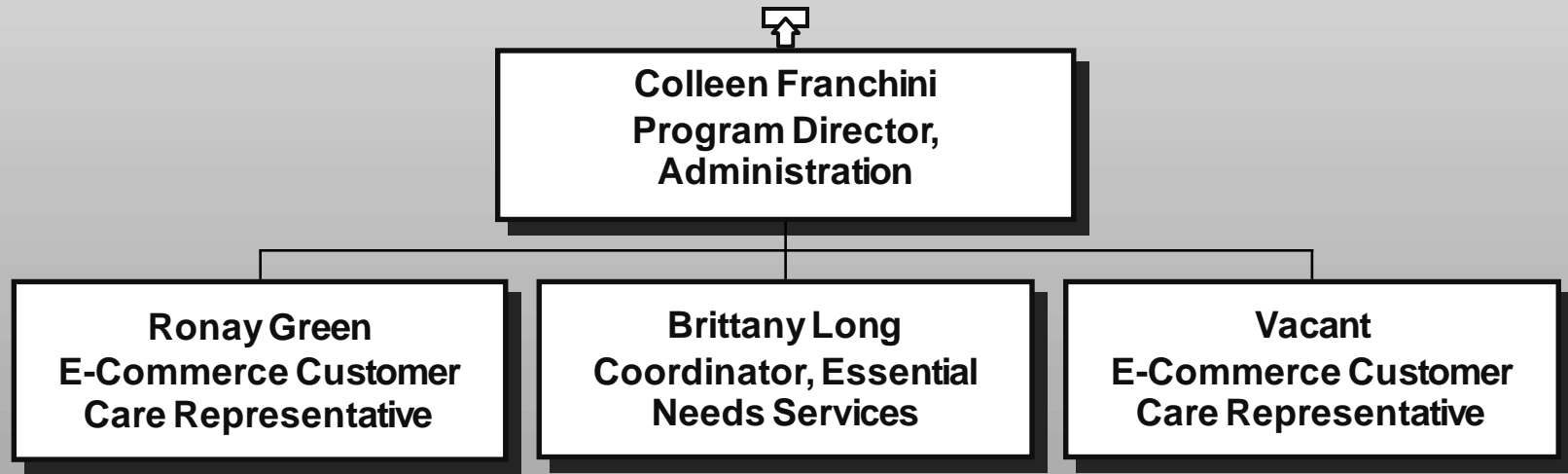


# OPERATIONS, NYSPSP

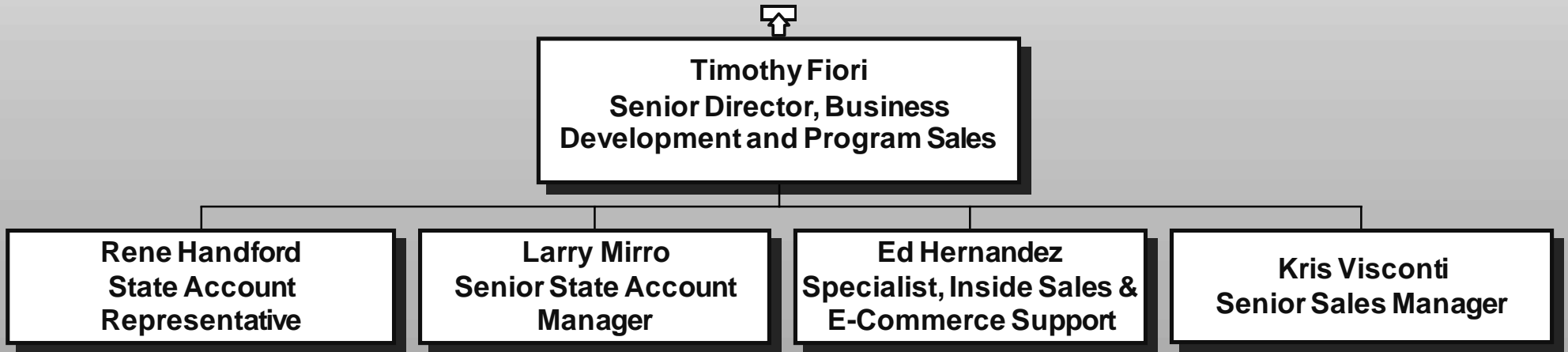




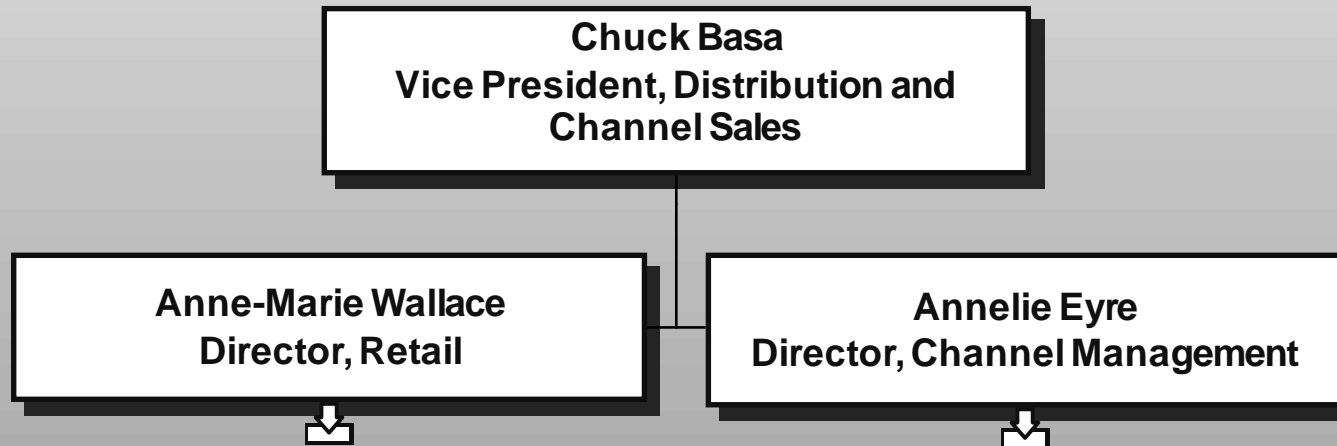
# CUSTOMER CARE, NYSPSP



# **BUSINESS DEVELOPMENT, NYSPSP**



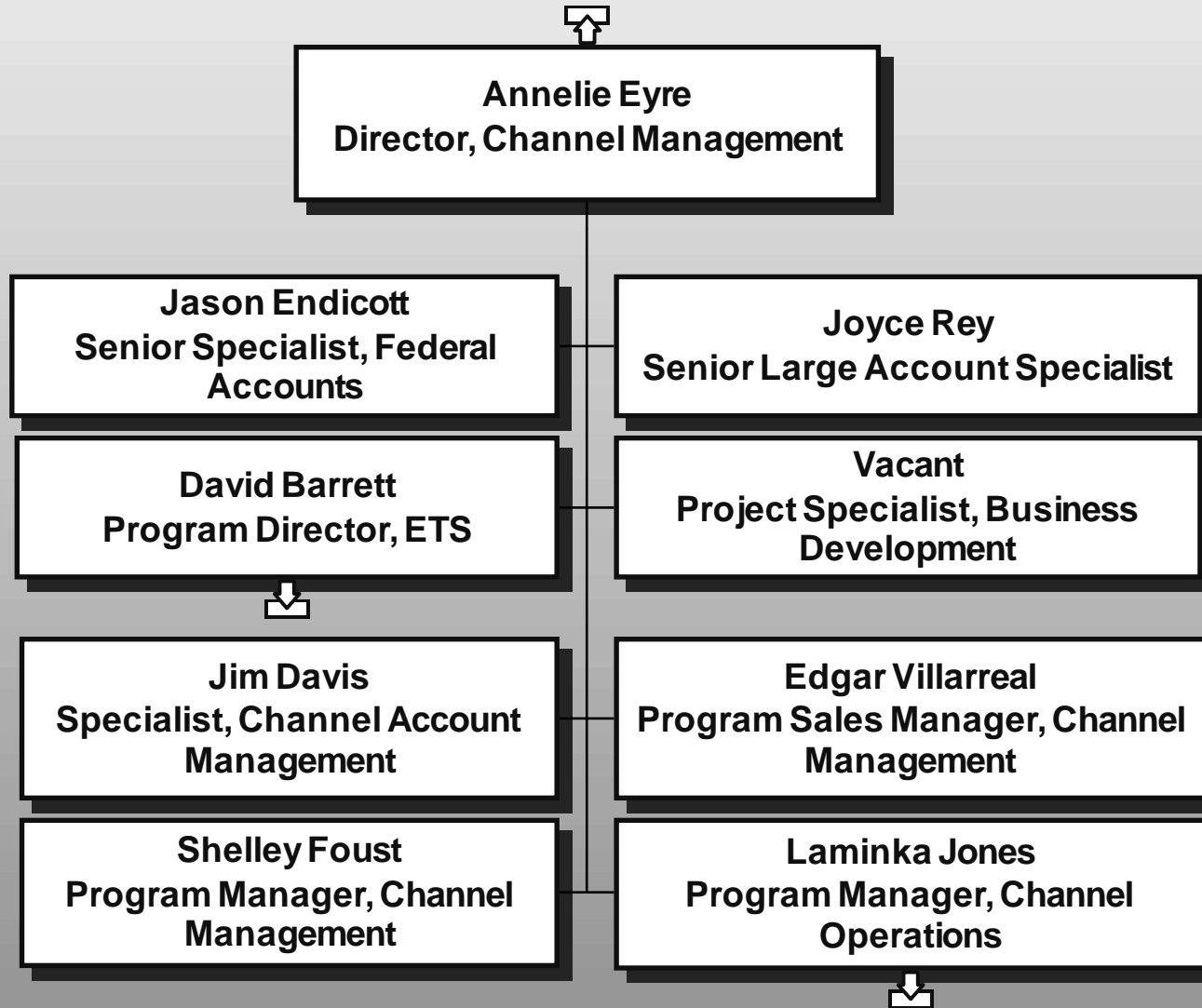
# DISTRIBUTION AND CHANNEL SALES



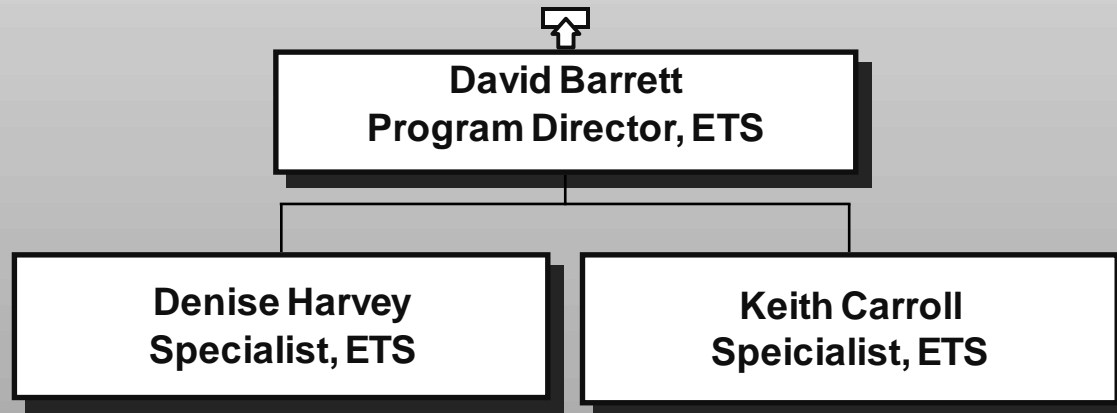
# MILITARY RESALE



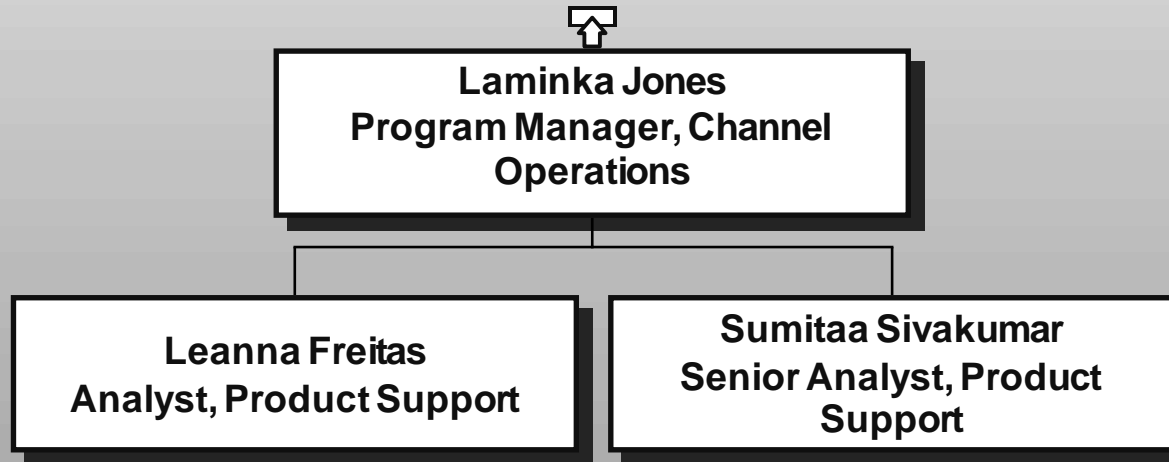
# CHANNEL MANAGEMENT



# Essentially the Same (ETS)



# CHANNEL OPERATIONS



# LEGAL AFFAIRS

